

OCF 2.0 – Mandate prefixing with UUID in RD for the Cloud – Core Technology WG CR 2573

Legal Disclaimer

THIS IS A DRAFT SPECIFICATION DOCUMENT ONLY AND HAS NOT BEEN ADOPTED BY THE OPEN CONNECTIVITY FOUNDATION. THIS DRAFT DOCUMENT MAY NOT BE RELIED UPON FOR ANY PURPOSE OTHER THAN REVIEW OF THE CURRENT STATE OF THE DEVELOPMENT OF THIS DRAFT DOCUMENT. THE OPEN CONNECTIVITY FOUNDATION AND ITS MEMBERS RESERVE THE RIGHT WITHOUT NOTICE TO YOU TO CHANGE ANY OR ALL PORTIONS HEREOF, DELETE PORTIONS HEREOF, MAKE ADDITIONS HERETO, DISCARD THIS DRAFT DOCUMENT IN ITS ENTIRETY OR OTHERWISE MODIFY THIS DRAFT DOCUMENT AT ANY TIME. YOU SHOULD NOT AND MAY NOT RELY UPON THIS DRAFT DOCUMENT IN ANY WAY, INCLUDING BUT NOT LIMITED TO THE DEVELOPMENT OF ANY PRODUCTS OR SERVICES. IMPLEMENTATION OF THIS DRAFT DOCUMENT IS DONE AT YOUR OWN RISK AMEND AND IT IS NOT SUBJECT TO ANY LICENSING GRANTS OR COMMITMENTS UNDER THE OPEN CONNECTIVITY FOUNDATION INTELLECTUAL PROPERTY RIGHTS POLICY OR OTHERWISE. IN CONSIDERATION OF THE OPEN CONNECTIVITY FOUNDATION GRANTING YOU ACCESS TO THIS DRAFT DOCUMENT, YOU DO HEREBY WAIVE ANY AND ALL CLAIMS ASSOCIATED HEREWITH INCLUDING BUT NOT LIMITED TO THOSE CLAIMS DISCUSSED BELOW, AS WELL AS CLAIMS OF DETRIMENTAL RELIANCE.

The OCF logo is a trademark of Open Connectivity Foundation, Inc. in the United States or other countries. *Other names and brands may be claimed as the property of others.

Copyright © 2018 Open Connectivity Foundation, Inc. All rights reserved.

Copying or other form of reproduction and/or distribution of these works are strictly prohibited.

8.2 Resource Publication

An OCF Cloud exposes a Resource Directory as defined in the OCF Core Specification Section 11.3.6. After a Device is registered with an OCF Cloud, the Device should publish its Resources to the OCF Cloud's Resource Directory following the procedures defined in the OCF Core Specification Section 11.3.6. The Device and OCF Cloud maintain a persistent TLS connection over which requests received by the OCF Cloud for the Device are routed.

The OCF Cloud maintains an internal association between the published Endpoint information from the Device and the Endpoint information that it (the OCF Cloud) exposes in the Links within the OCF Cloud's Resource Directory. The Endpoint exposed by the OCF Cloud for all Resources published to it is that of the OCF Cloud itself and not the publishing Device. These Endpoints use a scheme of "coaps+tcp".

There is potential ambiguity where different instances of Devices from the same vendor (e.g. multiple lights) publish their Resources; this is because the local "href" Link Parameter that is provided to the RD is likely to be the same in each case. In order to avoid this ambiguity the Resource Directory shall prepend the "href" that is published with the Device ID for the publishing Device. Thus ensuring that all requests received by the OCF Cloud have a unique URI per published Resource.

Figure 5 for an example showing the provided Device ID from the Device; Figure 6 shows the prepending of the Device ID to the "href" Link Parameter in the Resource Directory itself.

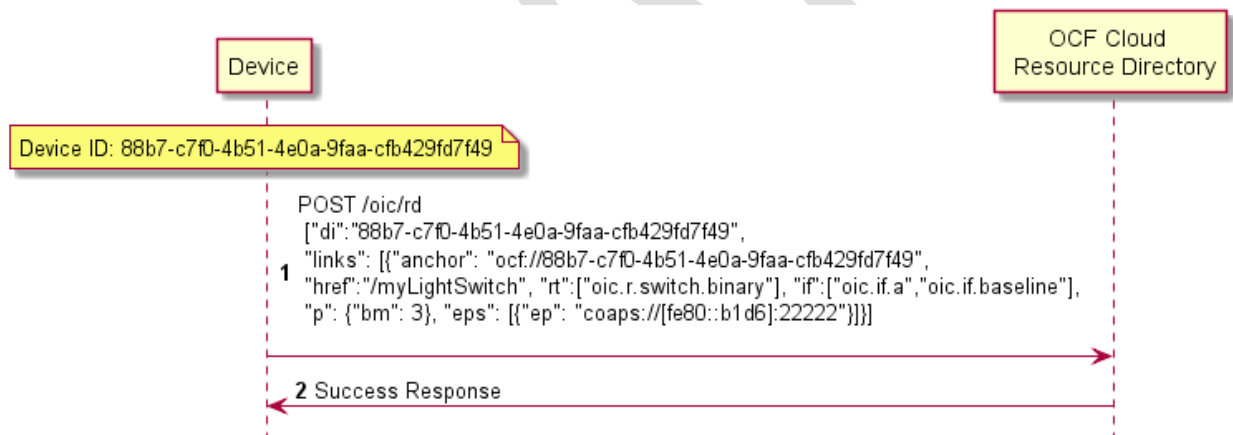


Figure 5 Resource publication to the OCF Cloud