

**OCF 2.3 – BLE Translation – BTG CR 2509**

## Legal Disclaimer

THIS IS A DRAFT SPECIFICATION DOCUMENT ONLY AND HAS NOT BEEN ADOPTED BY THE OPEN CONNECTIVITY FOUNDATION. THIS DRAFT DOCUMENT MAY NOT BE RELIED UPON FOR ANY PURPOSE OTHER THAN REVIEW OF THE CURRENT STATE OF THE DEVELOPMENT OF THIS DRAFT DOCUMENT. THE OPEN CONNECTIVITY FOUNDATION AND ITS MEMBERS RESERVE THE RIGHT WITHOUT NOTICE TO YOU TO CHANGE ANY OR ALL PORTIONS HEREOF, DELETE PORTIONS HEREOF, MAKE ADDITIONS HERETO, DISCARD THIS DRAFT DOCUMENT IN ITS ENTIRETY OR OTHERWISE MODIFY THIS DRAFT DOCUMENT AT ANY TIME. YOU SHOULD NOT AND MAY NOT RELY UPON THIS DRAFT DOCUMENT IN ANY WAY, INCLUDING BUT NOT LIMITED TO THE DEVELOPMENT OF ANY PRODUCTS OR SERVICES. IMPLEMENTATION OF THIS DRAFT DOCUMENT IS DONE AT YOUR OWN RISK AMEND AND IT IS NOT SUBJECT TO ANY LICENSING GRANTS OR COMMITMENTS UNDER THE OPEN CONNECTIVITY FOUNDATION INTELLECTUAL PROPERTY RIGHTS POLICY OR OTHERWISE. IN CONSIDERATION OF THE OPEN CONNECTIVITY FOUNDATION GRANTING YOU ACCESS TO THIS DRAFT DOCUMENT, YOU DO HEREBY WAIVE ANY AND ALL CLAIMS ASSOCIATED HERewith INCLUDING BUT NOT LIMITED TO THOSE CLAIMS DISCUSSED BELOW, AS WELL AS CLAIMS OF DETRIMENTAL RELIANCE.

The OCF logo is a trademark of Open Connectivity Foundation, Inc. in the United States or other countries. \*Other names and brands may be claimed as the property of others.

Copyright © 2018 Open Connectivity Foundation, Inc. All rights reserved.

Copying or other form of reproduction and/or distribution of these works are strictly prohibited.

27

28

29	1	Scope .....	2
30	2	Normative references .....	3
31	3	Terms, definitions, symbols and abbreviations .....	3
32	3.1	Terms and definitions.....	3
33	3.1.1	Symmetric, Asymmetric Bridging .....	<b>Error! Bookmark not defined.</b>
34	3.1.2	Bridged Protocol.....	<b>Error! Bookmark not defined.</b>
35	3.1.3	GATT-based Profile.....	3
36	3.2	Symbols and abbreviations .....	3
37	3.2.1	GATT .....	3
38	3.2.2	ATT.....	3
39	3.2.3	GAP .....	3
40	8	BLE Translation .....	4
41	8.1	Operational Scenarios .....	4
42	8.1.1	Use case for BLE Bridging .....	4
43	8.2	Requirements specific to BLE Bridging Function .....	5
44	8.2.1	Requirements specific to BLE.....	5
45	8.2.2	Exposing BLE GATT Servers to OCF Clients.....	5
46	8.2.3	Protocol translation between BLE and OCF .....	12
47	8.2.4	Security.....	<b>Error! Bookmark not defined.</b>
48	12	Device Type definitions .....	16
49	13	Resource Type definitions.....	16
50		Annex A (Informative) BLE GATT based Data Model .....	17
51	A.1	BLE GATT based data model & GATT features.....	17
52		Annex B (Informative) Supporting Atomic Measurement Operation in BLE.....	21
53	B.1	Atomic Measurement Resource Type in OCF .....	21
54	B.2	Case 1. One Characteristic covers all properties of an Atomic Measurement	
55		Resource Type.....	21
56	B.3	Case 2. Multiple Characteristics cover all properties of an Atomic Measurement	
57		Resource Type.....	22

58

59

60

## 61 **1 Scope**

62 This document specifies a framework for translation between OCF devices and other ecosystems,  
 63 and specifies the behaviour of a BLE Bridge Platform that exposes servers in non-OCF ecosystem to  
 64 OCF clients and/or exposes OCF servers to clients in non-OCF ecosystem. Translation per specific  
 65 device is left to other specification (deep translation). This document provides generic requirements  
 66 that apply unless overridden by a more specific document.

67 **2 Normative references**

68 Adopted Bluetooth Profiles, Services, Protocols and Transports  
69 <https://www.bluetooth.com/specifications/adopted-specifications>

70 Bluetooth Core Specification 4.0 or higher  
71 <https://www.bluetooth.com/specifications/bluetooth-core-specification>

72 OCF Core Specification, Open Connectivity Foundation Core Specification, Version 1.3  
73 [https://openconnectivity.org/specs/OCF\\_Core\\_Specification\\_v1.3.0.pdf](https://openconnectivity.org/specs/OCF_Core_Specification_v1.3.0.pdf)

74 OCF Resource Type Specification, *Open Connectivity Foundation Security Specification*, Version  
75 1.3  
76 [https://openconnectivity.org/specs/OCF\\_Resource\\_Type\\_Specification\\_v1.3.0.pdf](https://openconnectivity.org/specs/OCF_Resource_Type_Specification_v1.3.0.pdf)

77 OCF Bridging Specification, *Open Connectivity Foundation Bridging Specification*, Version 1.3  
78 [https://openconnectivity.org/specs/OCF\\_Bridging\\_Specification\\_v1.3.0.pdf](https://openconnectivity.org/specs/OCF_Bridging_Specification_v1.3.0.pdf)

79 OCF Security Specification, *Open Connectivity Foundation Security Specification*, Version 1.3  
80 [https://openconnectivity.org/specs/OCF\\_Security\\_Specification\\_v1.3.0.pdf](https://openconnectivity.org/specs/OCF_Security_Specification_v1.3.0.pdf)

81 IETF RFC 4122, *A Universally Unique IDentifier (UUID) URN Namespace*, July 2005  
82 <https://www.rfc-editor.org/info/rfc4122>

83 IETF RFC 7231, *Hypertext Transfer Protocol (HTTP/1.1): Semantics and Content*, June 2014  
84 <https://www.rfc-editor.org/info/rfc7231>

85 **3 Terms, definitions, symbols and abbreviations**

86 **3.1 Terms and definitions**

87 **3.1.1 GATT-based Profile**

88 A BLE profile using procedures and operating models provided by GATT profile

89 **3.2 Symbols and abbreviations**

90 **3.2.1 GATT**

91 Generic ATtribute profile

92 Generic Attribute Profile describes a service framework using the Attribute Protocol for discovering  
93 services, and for reading and writing characteristic values on a peer device (vol 3 part G of Bluetooth  
94 Core Specification).

95 **3.2.2 ATT**

96 ATtribute protocol

97 ATT is a protocol for discovering, reading, and writing attributes on a peer device (Vol 3, part F of  
98 Bluetooth Core Specification)

99 **3.2.3 GAP**

100 Generic Access Profile

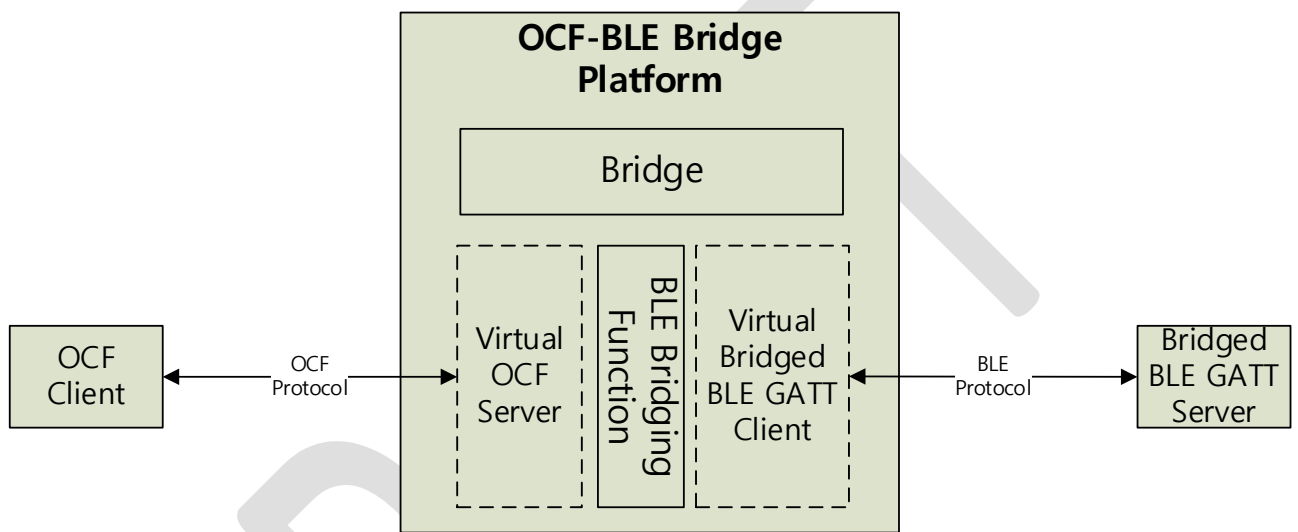
101 GAP defines the generic procedures related to discovery of Bluetooth devices (idle mode procedures)  
102 and link management aspects of connecting to Bluetooth devices (connecting mode procedures). It  
103 also defines procedures related to use of different security levels. In addition, this profile includes  
104 common format requirements for parameters accessible on the user interface level. (vol 3, part C of  
105 Bluetooth Core Specification)

106 **8 BLE Translation**

107 **8.1 Operational Scenarios**

108 The overall goal is to make Bridged BLE GATT Servers appear to OCF Clients as if they were native  
109 OCF Servers in the local network or cloud environment.

110 “Deep translation” between specific BLE Profile and OCF Device is specified in a separate document.  
111 Figure 1 shows overview of BLE Bridge Platform and its general topology. The BLE Bridging Function  
112 supports Asymmetric bridging. It exposes BLE GATT Servers to OCF Clients. Each Bridged BLE  
113 GATT Server shall be represented as a Virtual OCF Server.

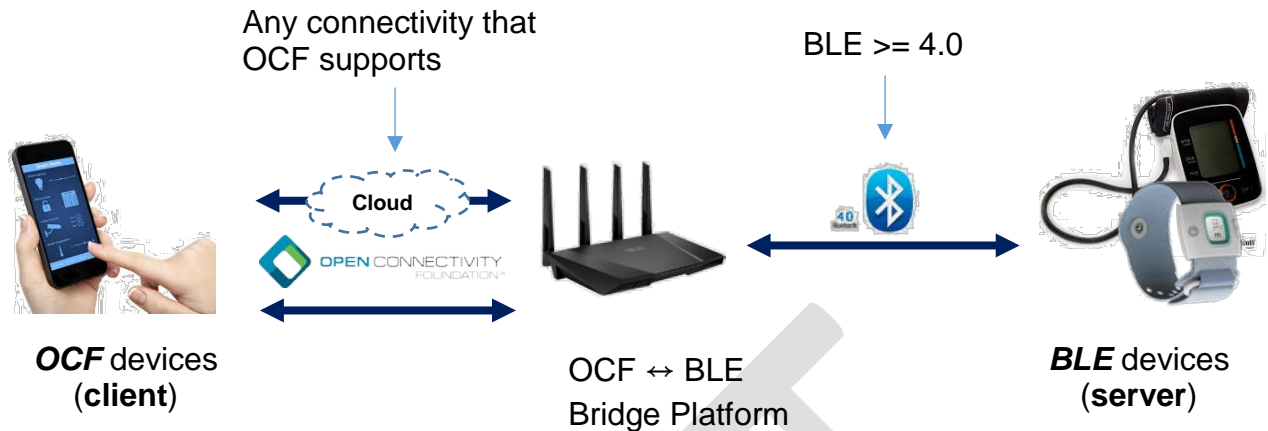


114  
115

116 **Figure 1 OCF-BLE Bridge Platform Components**

117 **8.1.1 Use case for BLE Bridging**

118 Figure 2 shows a use case for an OCF Client and BLE GATT Server. An OCF client on a smartphone  
119 reads a BLE thermometer device through an OCF-BLE Bridge Platform. Any connectivity that OCF  
120 supports is used for communications between the OCF Client and the OCF-BLE Bridge Platform. The  
121 OCF Client can communicate with OCF-BLE Bridge Platform through OCF Cloud.



122  
123 **Figure 2 BLE Bridging use case in real life**

124 **8.2 Requirements specific to BLE Bridging Function**

125 OCF-BLE Bridge Platform shall satisfy section 5.2 General Requirements of OCF Bridging  
126 Specification.

127 A BLE Bridging Function supports asymmetric bridging. It exposes BLE GATT server to OCF clients  
128 only. Therefore, it shall play a BLE GATT client role. (This is a requirement so that users can expect  
129 that a certified OCF Bridge Platform will be able to talk to any BLE GATT server device, without the  
130 user having to buy some other device.).

131 **8.2.1 Requirements specific to BLE**

132 The version of Bluetooth SIG core specification that this document refers to is 4.0 or higher. Bluetooth  
133 BR/EDR is not included in the scope of this document.

134 **8.2.2 Exposing BLE GATT Servers to OCF Clients**

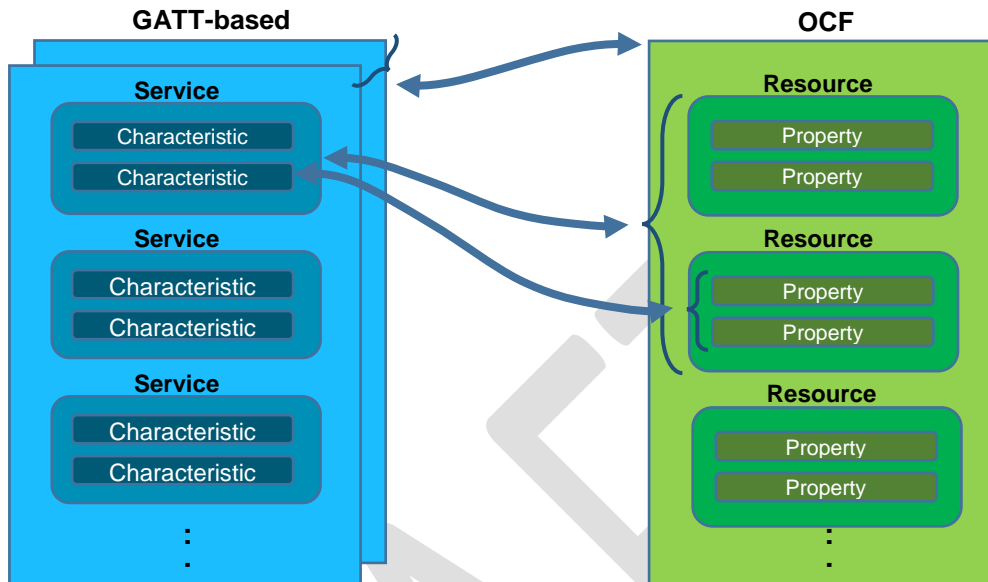
135 The requirements in this section apply when using algorithmic translation, and by default apply to  
136 deep translation unless the relevant specification for such deep translation specifies otherwise.

137 Basic translation rule between BLE Service/Characteristic model and OCF Resource model is  
138 described in Table 1. One or more BLE GATT-based profiles should be mapped to one Virtual OCF  
139 Server (e.g. Health Thermometer profile (HTP) is mapped to Body Thermometer device  
140 (oic.d.bodythermometer)). A BLE Service should be mapped to one or more OCF Resources (e.g.  
141 Health Thermometer Service is mapped to Temperature (oic.r.body\_temperature) and Body Location  
142 for temperature (oic.r.body.location.temperature)). Each Characteristic of BLE Service should be  
143 mapped to one or more Properties of OCF Resource (if there is no BLE Characteristic corresponding  
144 to an OCF Property, default value should be used). Table 2 is a translation example of this rule.

145 **Table 1 Translation rule between BLE and OCF data model**

From BLE	mapping count	To OCF	mapping count
GATT-based profile	n	OCF Device	1
Service	1	OCF Resource	n

Characteristic	1	OCF Resource property	n
Characteristic Descriptor	1	OCF Notification on/off option	1



146

147

**Table 2 BLE → OCF translation example (Blood Pressure device)**

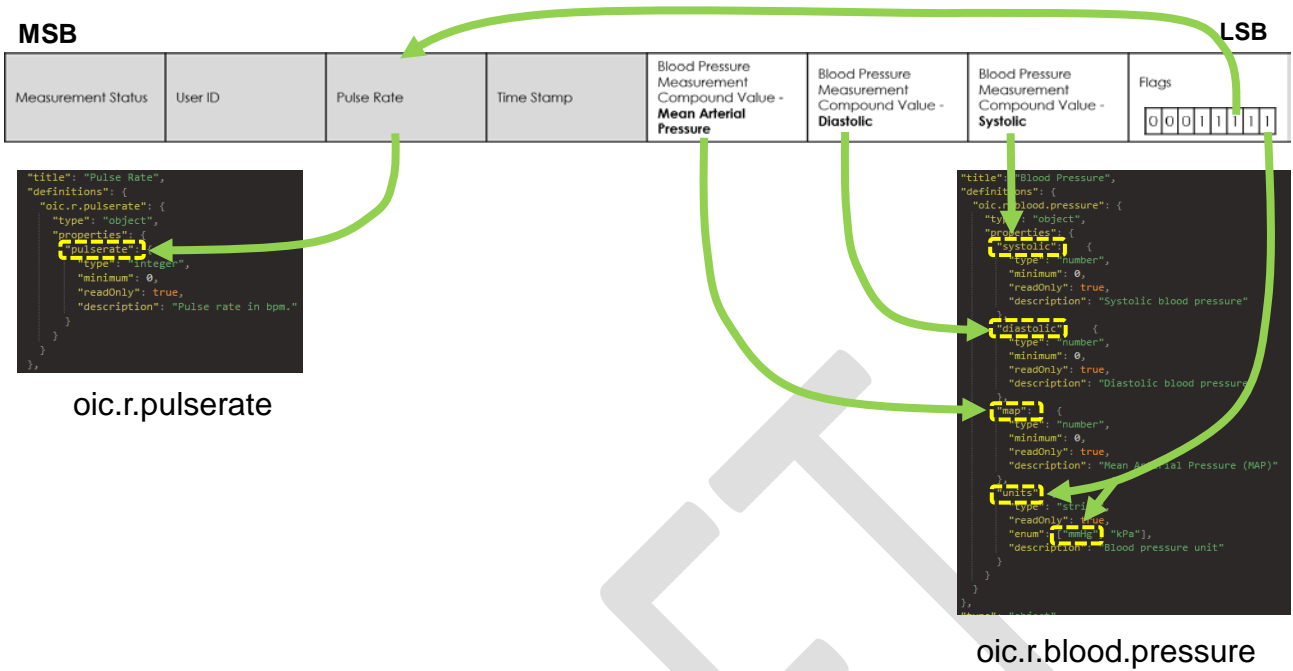
	BLE	OCF
<b>BLE Profile → OCF Device</b>	Blood Pressure Profile (BLP)	Blood Pressure Monitor device (oic.d.bloodpressuremonitor)
<b>BLE Service → OCF Resource</b>	Blood Pressure Measurement Service (org.bluetooth.service.blood_pressure)	Blood Pressure (oic.r.blood.pressure) Pulse Rate (oic.r.pulserate)
	Device Information Service (org.bluetooth.service.device_information)	Device (oic.wk.d) Platform (oic.wk.p)
<b>BLE Characteristic → OCF Resource Property</b>	Blood Pressure Measurement (org.bluetooth.characteristic.blood_pressure_measurement)	oic.r.blood.pressure.systolic oic.r.blood.pressure.diastolic oic.r.blood.pressure.map oic.r.blood.pressure.units oic.r.pulserate.pulserate

148

149

150

Figure 3 shows an example for 1:N mapping between “BLE Characteristic” and “OCF Properties”. In this case, multiple fields in “Blood Pressure Measurement Service” are mapped into the properties of OCF Resources (oic.r.pulserate, oic.r.blood.pressure).



151

152 **Figure 3 An example for 1:N mapping between “BLE Characteristic” and “OCF Properties”**

153 **8.2.2.1 Translation for well-defined set**

154 If a BLE Profile is in a well-defined set (defined in Device Mapping specification (“deep translation”)),  
 155 translation should be done as follows. Table 3 is the list of BLE GATT-based Profiles which have  
 156 corresponding OCF Resources as of now.

157

**Table 3 BLE GATT-based Profile – OCF Resource mapping**

BLE GATT-based Profile	BLE Service	OCF Resource		OCF Device Type
		Atomic Measurement Resource Type	Resource Type	
Blood Pressure Profile	Blood Pressure Service	oic.r.bloodpressuremonitor-am	oic.r.blood.pressure	oic.d.bloodpressuremonitor
			oic.r.pulserate	
	Device Information Service		oic.wk.d	
			oic.wk.p	
Glucose Profile	Glucose Service	oic.r.glucosemeter-am	oic.r.glucose	oic.d.glucosemeter
			oic.r.glucose.carb	
			oic.r.glucose.exercise	
			oic.r.glucose.hba1c	
			oic.r.glucose.health	
			oic.r.glucose.meal	
			oic.r.glucose.medication	
			oic.r.glucose.samplelocation	
oic.r.glucose.testers				

	Device Information Service	oic.wk.d		
		oic.wk.p		
Health Thermometer Profile	Health Thermometer Service	oic.r.bodythermometer-am	oic.r.temperature	oic.d.bodythermometer
			oic.r.body.location.temperature	
	Device Information Service	oic.wk.d		
		oic.wk.p		
Weight Scale Profile	Weight Scale Service	oic.r.bodyscale-am	oic.r.weight	oic.d.bodyscale
			oic.r.bmi	
			oic.r.height	
			oic.r.body.fat	
			oic.r.body.water	
			oic.r.body.slm	
	oic.r.body.ffm			
	Device Information Service	oic.wk.d		
		oic.wk.p		

158

 159 **URI for Virtual OCF Resource**

- 160
- Case 1. A BLE Service is mapped to an OCF Resource:

 161 */<BLE Service name without prefix "org.bluetooth.service">*, (e.g. BLE Service "Fitness  
 162 Machine (org.bluetooth.service.fitness\_machine)": /fitness\_machine)

- 163
- Case 2. A BLE Service is mapped to multiple OCF Resources:

 164 If corresponding multiple OCF Resources are grouped by Collection (or Atomic Measurement  
 165 Collection), URI should be as follows:

 166 a. URI for Collection Resource: */<BLE Service name without prefix*  
 167 *"org.bluetooth.service">* (e.g. BLE Service "Health Thermometer (org.bluetooth.  
 168 service.health\_thermometer)": /health\_thermometer)

 169 b. URI for each OCF Resource link: */<OCF Resource Type value of corresponding linked*  
 170 *Resource without prefix "oic.r">* (e.g. /temperature for oic.r.temperature,  
 171 /body.location.temperature for oic.r.body.location.temperature)

 172 If corresponding multiple OCF Resources are not grouped by Collection, URI should be as  
 173 follows:

 174 a. URI for each OCF Resource: */<BLE Service name without prefix*  
 175 *"org.bluetooth.service">/<OCF Resource Type value of corresponding Resource*  
 176 *without prefix "oic.r">*

177

**Table 4 URI mapping example**

	BLE	OCF
<b>URI</b>	Health Thermometer Service	/health_thermometer (for Atomic Collection Resource)



	(org.bluetooth.service.health_thermometer)	/temperature (for oic.r.temperature)  /body.location.temperature (for oic.r.body.location.temperature)
--	--	--

178

 179 **Common Properties of Resource Type**

- 180
- Resource Type (“rt”, Mandatory): value of “rt” in corresponding OCF Resource specified in OCF Resource Type Specification.
- 181
- Interface (“if”, Mandatory): value of “if” in corresponding OCF Resource specified in OCF Resource Type Specification.
- 182
- 183

 184 **Platform Resource (“rt” == oic.wk.p)**

- 185
- Platform ID (“pi”, Mandatory): since BLE device does not provide a mandatory unique “name” (or id) which can be used to generate name-based UUID described in IETF RFC 4122 section 4.3, randomly-generated UUID described in IETF RFC 4122 section 4.4 should be used for Platform ID.
- 186
- 187
- 188
- Manufacturer Name (“mnmn”, Mandatory): if Device Information Service is implemented “manufacturer\_name\_string” Characteristic should be used, or “<device\_name> by unknown” should be used as default value (<device\_name> is a Characteristic of GAP).
- 189
- 190
- 191

 192 **Device Resource (“rt” == oic.wk.d)**

- 193
- Spec Version (“icv”, Mandatory): Spec version of the core specification that the Bridging Function implements should be used.
- 194
- Device ID (“di”, Mandatory): as specified in the OCF Security Specification, the value of the “di” property of OCF Devices (including Virtual OCF Devices) shall be established as part of Onboarding of that Virtual OCF Device.
- 195
- 196
- 197
- Data Model Version (“dmv”, Mandatory): spec version of the vertical specification this device data model is implemented to should be used. Syntax is “<vertical>.major.minor”.
- 198
- 199
- Protocol Independent ID (“piid”, Mandatory): randomly-generated UUID described in IETF RFC 4122 section 4.4 should be used for piid.
- 200
- 201

 202 **Exposing a BLE GATT Server as a Virtual OCF Server**

203 Table 5 shows how OCF Device properties as specified in Table 20 in OCF Core Specification, should  
 204 be derived, typically from fields specified in BLE Device Information Service (Spec Type:  
 205 org.bluetooth.service.device\_information, Service ID: 0x180A) and Generic Access Service (Spec  
 206 Type: org.bluetooth.service.generic\_access, Service ID: 0x1800).

207

**Table 5: oic.wk.d resource type definition**

To Property title	OCF Property name	OCF Description	OCF Mandatory?	From BLE Device Service Characteristic value	BLE Description	BLE Mandatory?
(Device) Name	n	Human friendly name For example, “Bob’s Thermostat”	Y	Device Name (Generic Access)		Y

Spec Version	icv	Spec version of the core specification this device is implemented to, The syntax is "core.major.minor"]	Y	(none)	Bridging Function should return its own value	
Device ID	di	Unique identifier for Device. This value shall be as defined in [OCF Security Specification] for DeviceID.	Y	(none)	Use as defined in the OCF Security Specification	
Protocol-Independent ID	piid	Unique identifier for OCF Device (UUID) . Randomly-generated UUID described in IETF RFC 4122 section 4.4 should be used for piid	Y	(none)	(none)	
Data Model Version	dmv	Spec version(s) of the vertical specifications this device data model is implemented to. The syntax is a comma separated list of "<vertical>.major.minor"]. <vertical> is the name of the vertical (i.e. sh for Smart Home)	Y	(none)	(none)	
Localized Descriptions	ld	Detailed description of the Device, in one or more languages. This property is an array of objects where each object has a 'language' field (containing an RFC 5646 language tag) and a 'value' field containing the device description in the indicated language.	N	(none)	(none)	
Software Version	sv	Version of the device software.	N	Software Revision String (Device Information)	This characteristic represents the software revision for the software within the device.	N
Manufacturer Name	dmn	Name of manufacturer of the Device, in one or more languages. This property is an array of objects where each object has a 'language' field (containing an RFC 5646 language tag) and a 'value' field containing the manufacturer name in the indicated language.	N	Manufacturer Name String (Device Information)	This characteristic represents the name of the manufacturer of the device.	N
Model Number	dmno	Model number as designated by manufacturer.	N	Model Number String (Device Information)	This characteristic represents the model number that is assigned by the device vendor.	N

208  
209  
210

Regarding configuration resource (oic.wk.con), it is not created on the Virtual OCF Server since that information/interaction is not supported on BLE side.

211  
 212  
 213  
 214  
 215

Table 6 shows how platform properties, as specified in Table 21 in OCF Core Specification, are derived, typically from fields specified in BLE Device Information Service and Generic Access Service.

**Table 6: oic.wk.p Resource Type definition**

To OCF Property title	OCF Property name	OCF Description	OCF Mandatory?	From BLE Device Service Characteristic value	BLE Description	BLE Mandatory?
Platform ID	pi	Unique identifier for the physical platform (UIUID); this shall be a UUID in accordance with IETF RFC 4122. It is recommended that the UUID be created using the random generation scheme (version 4 UUID) specific in the RFC.	Y	(none)	(none)	
Manufacturer Name	mnmn	Name of manufacturer (not to exceed 16 characters)	Y	Manufacturer Name String (Device Information). if Device Information Service is not implemented "<device_name> by unknown" should be used as default value (<device_name> is a Characteristic of GAP)	This characteristic represents the name of the manufacturer of the device.	N
Manufacturer Details Link (URL)	mnml	URL to manufacturer (not to exceed 32 characters)	N	(none)	(none)	
Model Number	mnmo	Model number as designated by manufacturer	N	Model Number String (Device Information)	This characteristic represents the model number that is assigned by the device vendor.	N
Date of Manufacture	mnmdt	Manufacturing date of device	N	(none)	(none)	
Platform Version	mnpv	Version of platform – string (defined by manufacturer)	N	Software Revision String (Device Information)	This characteristic represents the software revision for the software within the device.	N
OS Version	mnos	Version of platform resident OS – string (defined by manufacturer)	N	(none)	BLE device usually has no os.	

Hardware Version	mnhw	Version of platform hardware	N	Hardware String (Device Information)	Revision (Device)	This characteristic represents the hardware revision for the hardware within the device.	N
Firmware version	mnfv	Version of device firmware	N	Firmware String (Device Information)	Revision (Device)	This characteristic represents the firmware revision for the firmware within the device.	N
Support URL	mnsI	URL that points to support information from manufacturer	N	(none)	(none)	(none)	
SystemTime	st	Reference time for the device	N	(none)	(none)	(none)	
Vendor ID	vid	Vendor defined string for the platform. The string is freeform and up to the vendor on what text to populate it.	N	Manufacturer Name String (Device Information)		This characteristic represents the name of the manufacturer of the device.	N

216

217

218

219

220

221

222

Table 7 shows how configurable OCF Platform properties, as specified in Table 16 in OCF Core Specification, should be derived as follows, if a BLE device does not implement Device Information Service, oic.wk.con.p should not be created on the Virtual OCF Server:

**Table 7: oic.wk.con.p Resource Type definition**

To OCF Property title	OCF Property name	OCF Description	OCF Mandatory?	From BLE Device Service Characteristic value	BLE Description	BLE Mandatory?
Platform Names	mnpn	Platform Identifier	N	Manufacturer Name String (Device Information)	This characteristic represents the name of the manufacturer of the device.	

223

224

225

No BLE Service equivalence exist for factory reset or restart, so there is no Characteristics for oic.wk.mnt properties Factory\_Reset and Reboot, so mapping for oic.wk.mnt is omitted.

226

### 8.2.2.2 On-the-fly Translation

227

228

If a BLE Profile is not in Table 3 (not belong to a well-defined set), a BLE Bridging Function does not translate it (on-the-fly translation is not supported).

229

### 8.2.3 Protocol translation between BLE and OCF

230

231

GATT profile [Bluetooth Core Specification] describes not only Service/Characteristic data model but also Features how to manipulate it (see A.1). GATT Features define how GATT-based data exchanges

232 takes place. The GATT features are used when we translate OCF CRUDN into BLE protocol and vice  
 233 versa.

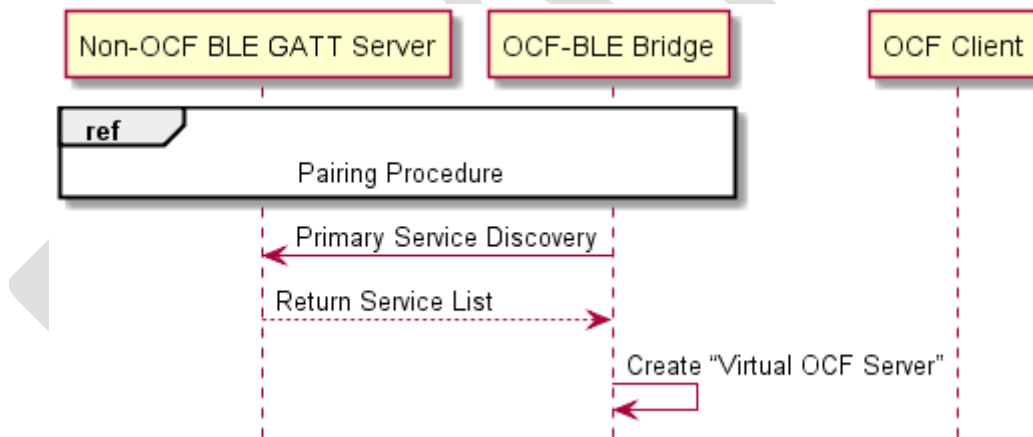
234 Table 8 shows translation rule between BLE GATT Feature and OCF CRUDN. When a BLE Bridging  
 235 Function receives CREATE/DELETE request from OCF client, it shall return corresponding error (4.xx  
 236 or 5.xx) because there are no corresponding Features for them. If a BLE Bridging Function receives  
 237 RETRIEVE/UPDATE request from OCF client, it shall translate it into Characteristic Value  
 238 Read/Characteristic Value Write respectively. NOTIFY request from OCF client shall be translated  
 239 into Characteristic Descriptor Value Write, and Characteristic Value Notification/Indication from BLE  
 240 GATT Server shall be translated into NOTIFICATION response.

241 **Table 8 Protocol translation rule between BLE and OCF**

BLE GATT Feature	OCF CRUDN
N/A (Not Supported)	CREATE
Characteristic Value Read	RETRIEVE
Characteristic Value Write	UPDATE
N/A (Not Supported)	DELETE
Characteristic Descriptor Value Write	NOTIFY request
Characteristic Value Notification/Indication	NOTIFICATION response

242

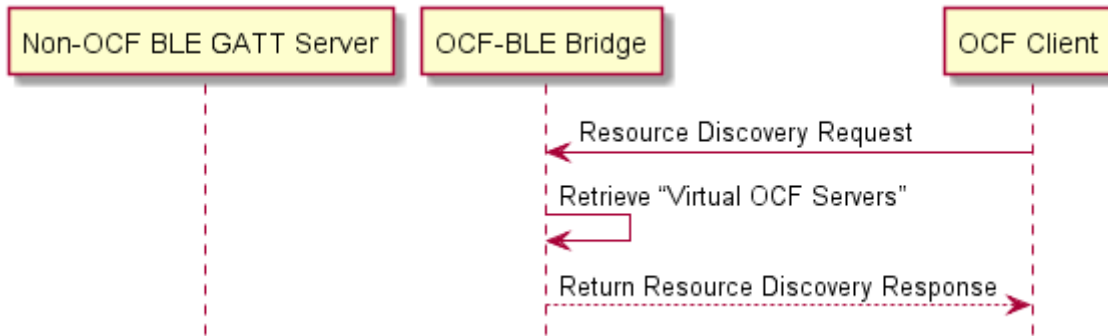
243 **8.2.3.1 Initialization**



244  
 245

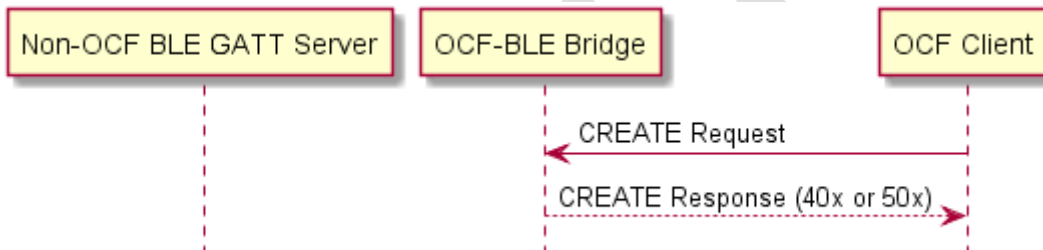
**Figure 4 Initialization**

246 **8.2.3.2 Resource Discovery**



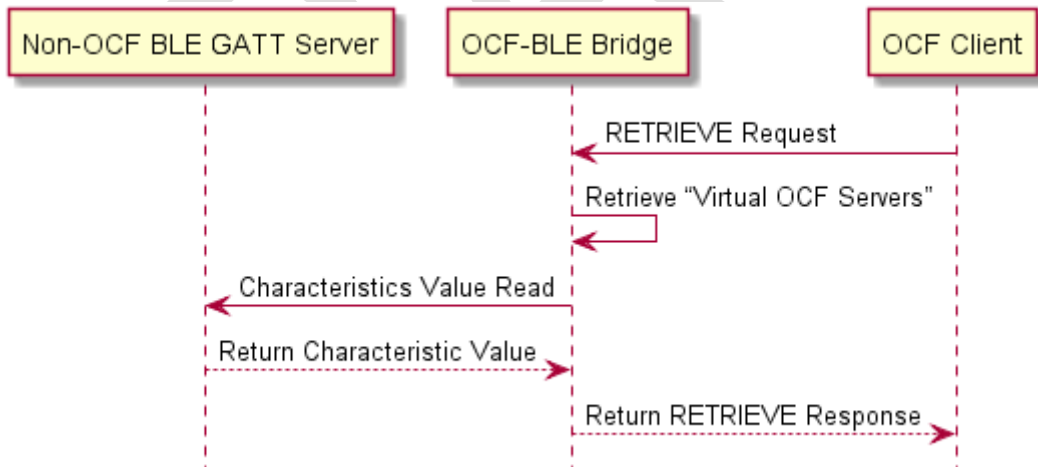
247  
248 **Figure 5 Resource Discovery**

249 **8.2.3.3 Create Resource**



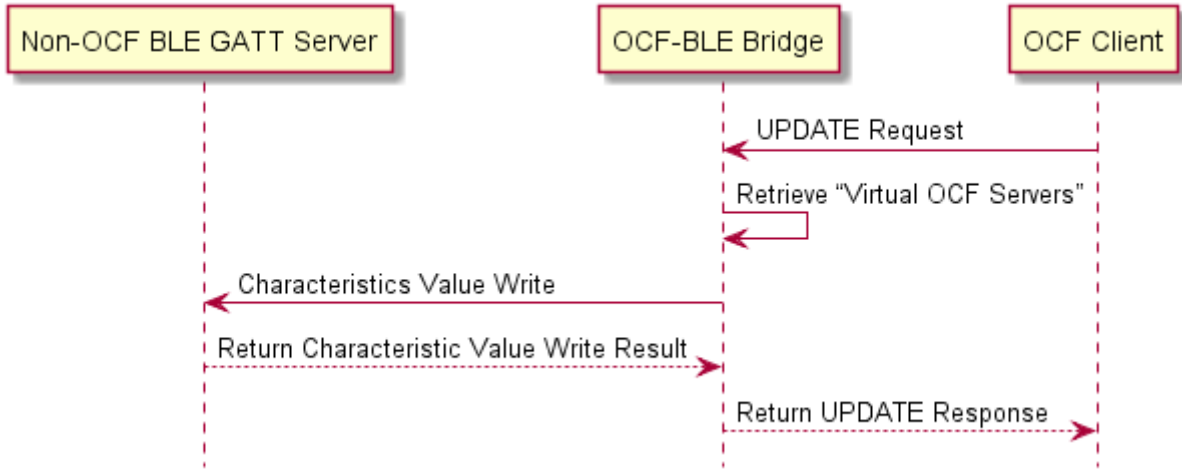
250  
251 **Figure 6 Create Resource**

252 **8.2.3.4 Retrieve Resource**



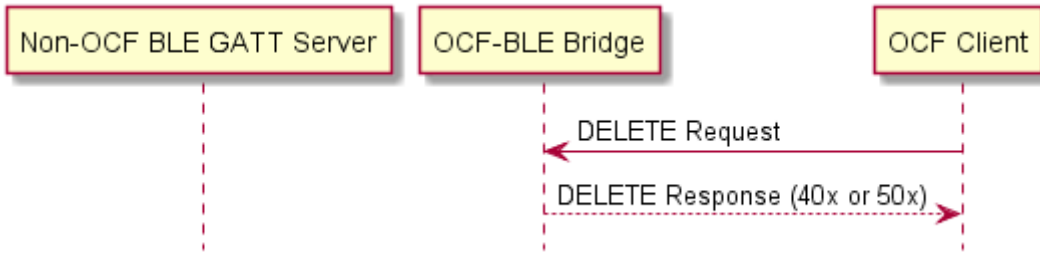
253  
254 **Figure 7 Retrieve Resource**

255 **8.2.3.5 Update Resource**



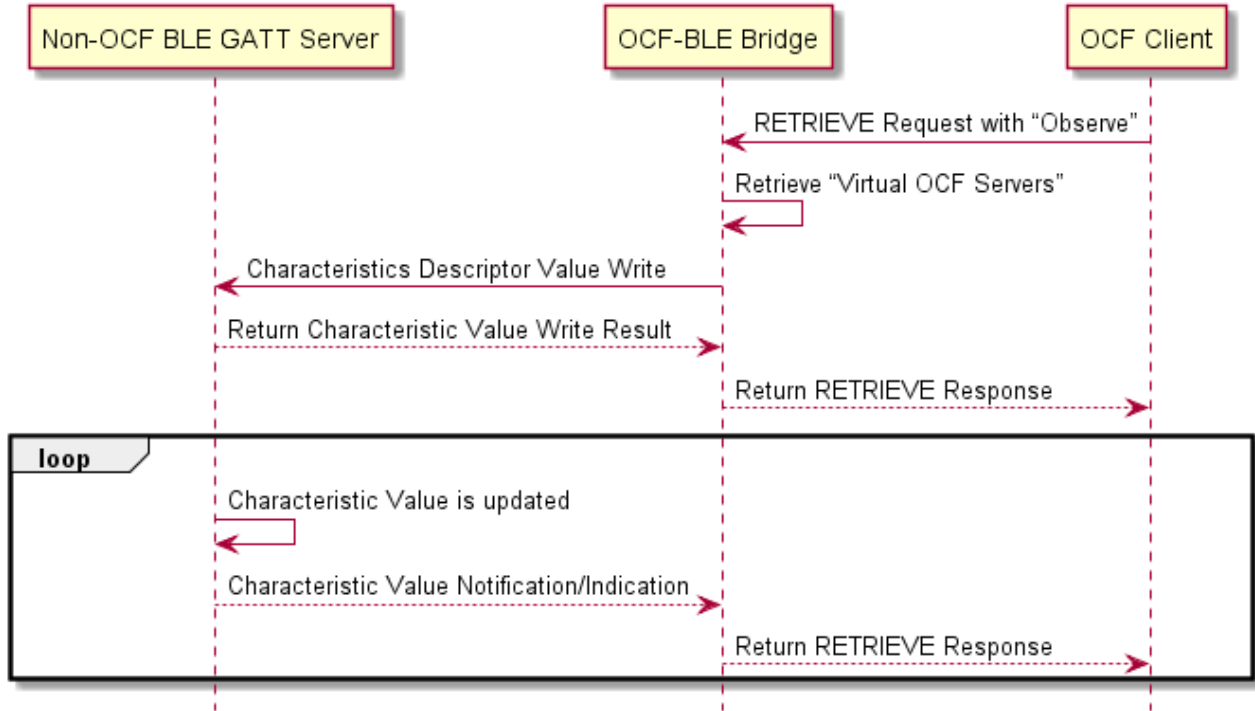
256  
257 **Figure 8 Update Resource**

258 **8.2.3.6 Delete Resource**



259  
260 **Figure 9 Delete Resource**

261 **8.2.3.7 Set Notification & Send Notification**



262  
263

**Figure 10 Set Notification & Send Notification**

264

265 **8.2.3.8 Error handling**

266 If a BLE operation fails, the Bridging Function sends an appropriate OCF error response to the OCF  
 267 Client. it constructs an appropriate OCF error message (e.g., diagnostic payload if using CoAP) from  
 268 the BLE error name and error code (if any), using the form "<error name>: <error message>", with  
 269 the <error name> taken from the ATT error code field and the <error message> taken from the ATT  
 270 error name, and the error code for the OCF network set to an appropriate value.

271 **12 Device Type definitions**

272 No additional definitions are required.

273 **13 Resource Type definitions**

274 Since on-the-fly translation is out of scope, general Resource Type of Collection Resource for BLE  
 275 devices, e.g., oic.r.bleobject is not required.



276

## Annex A (Informative) BLE GATT based Data Model

277

### A.1 BLE GATT based data model & GATT features

278

The Generic Attribute Profile (GATT) defines a service framework using the Attribute Protocol. This framework defines procedures and formats of services and their characteristics. The procedures defined include discovering, reading, writing, notifying and indicating characteristics, as well as configuring the broadcast of characteristics.

279

280

281

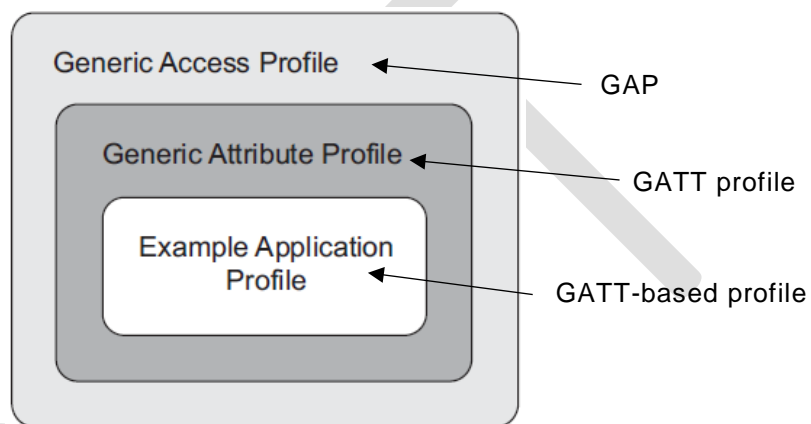
282

#### Profile dependency

283

Figure 11 depicts the structure and the dependencies of the profiles. A profile is dependent upon another profile if it re-uses parts of that profile by implicitly or explicitly referencing it.

284



285

286

**Figure 11 profile dependencies**

287

#### Configurations and roles

288

There are two roles defined in GATT profile:

289

- Client: This is the device that initiates commands and requests towards the server and can receive responses, indications and notifications sent by the server.

290

291

- Server: This is the device that accepts incoming commands and requests from the client and sends responses, indications and notifications to a client.

292

293

A device can act in both roles at the same time.

294

#### GATT profile hierarchy

295

The GATT Profile specifies the structure in which profile data is exchanged. This structure defines basic elements such as services and characteristics, used in a profile. All of the elements are contained by Attributes. Attributes used in the ATT are containers that carry this profile data.

296

297

298

The top level of the hierarchy is a profile. A profile is composed of one or more services necessary to fulfil a use case. A service is composed of characteristics or references to other services. Each characteristic contains a value and may contain optional information about the value. The service and characteristic and the components of the characteristic (i.e. value and descriptors) contain the profile data and are all stored in Attributes on the server.

299

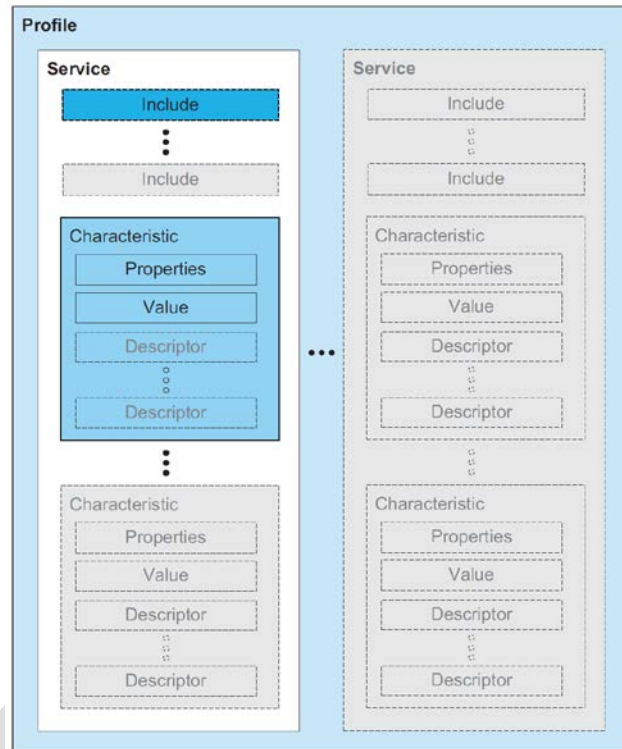
300

301

302

303 Under GATT profile, entity that provides Service-Characteristics data model plays “server” role and  
 304 entity that gets data from GATT server plays “client” role.

305 There are other application profiles based on GATT profile. They are called “GATT-based profiles”.



306  
 307 **Figure 12 GATT profile hierarchy**

308 **Characteristic**

309 A characteristic is a value used in a service along with properties and configuration information about  
 310 how the value is accessed and information about how the value is displayed or represented. In GATT,  
 311 a characteristic is defined by its characteristic definition. A characteristic definition contains a  
 312 characteristic declaration, characteristic properties, and a value and may contain descriptors that  
 313 describe the value or permit configuration of the server with respect to the characteristic.

314 **GATT features**

315 GATT profile also supports GATT features. GATT feature defines how GATT-based data exchanges  
 316 take place. Each feature is mapped to one or more sub-procedures. These sub-procedures describe  
 317 how the ATT is used to accomplish the corresponding feature.

318 **Table 9 GATT Features & ATT protocol**

	Feature	Sub-procedure	ATT protocol
1	Server Configuration	Exchange MTU	Exchange MTU Request Exchange MTU Response Error Response
2	Primary Service Discovery	Discover All Primary Services	Read By Group Type Request

			Read By Group Type Response Error Response
		Discover Primary Services by service UUID	Find By Type Value Request Find By Type Value Response Error Response
3	Relationship Discovery	Find Included Services	Read By Type Request Read By Type Response Error Response
4	Characteristic Discovery	Discover All Characteristic of a Service	Read By Type Request Read By Type Response Error Response
		Discover Characteristic by UUID	Read By Type Request Read By Type Response Error Response
5	Characteristic Descriptor Discovery	Discover All Characteristic Descriptors	Find Information Request Find Information Response Error Response
6	Characteristic Value Read	Read Characteristic Value	Read Request Read Response Error Response
		Read Using Characteristic UUID	Read By Type Request Read By Type Response Error Response
		Read Long Characteristic Values	Read Blob Request Read Blob Response Error Response
		Read Multiple Characteristic Values	Read Multiple Request Read Multiple Response Error Response
7	Characteristic Value Write	Write Without Response	Write Command
		Signed Write Without Response	Write Command
		Write Characteristic Value	Write Request Write Response Error Response
		Write Long Characteristic Values	Prepare Write Request Prepare Write Response Execute Write Request Execute Write Response Error Response
		Characteristic Value Reliable Writes	Prepare Write Request Prepare Write Response Execute Write Request Execute Write Response Error Response
8	Characteristic Value Notification	Notifications	Handle Value Notification
9	Characteristic Value Indication	Indications	Handle Value Indication Handle Value Confirmation

10	Characteristic Descriptor Value Read	Read Characteristic Descriptors	Read Request Read Response Error Response
		Read Long Characteristic Descriptors	Read Blob Request Read Blob Response Error Response
11	Characteristic Descriptor Value Write	Write Characteristic Descriptors	Write Request Write Response Error Response
		Write Long Characteristic Descriptors	Prepare Write Request Prepare Write Response Prepare Write Request Prepare Write Response Error Response

319

320

321

322

DRAFT

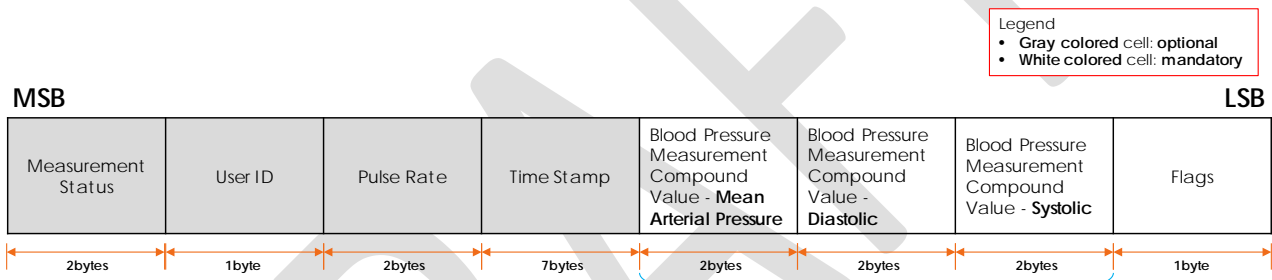
323 **Annex B (Informative) Supporting Atomic Measurement Operation in BLE**

324 **B.1 Atomic Measurement Resource Type in OCF**

325 Most OCF healthcare devices adopts Atomic Measurement feature. Atomic Measurement Resource  
 326 Type is a specialisation of a Collection to ensure that the Client can only access the Properties of the  
 327 linked Resources as a single group. Thus, if an OCF device corresponding to a BLE device  
 328 implements Atomic Measurement Resource Type, the BLE Bridging Function should guarantee that  
 329 BLE GATT Characteristic values corresponding to properties of the Atomic Measurement Resource  
 330 Type can be retrieved in atomic way.

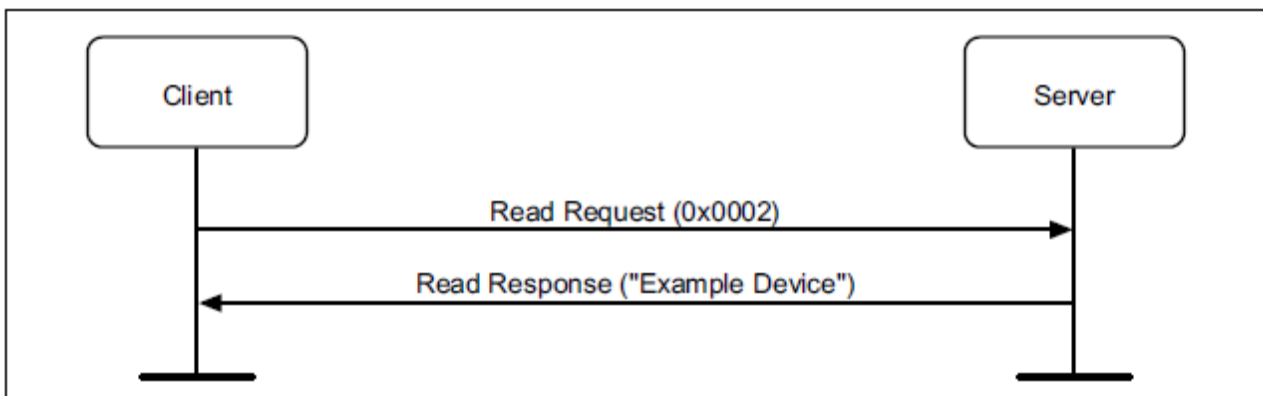
331 **B.2 Case 1. One Characteristic covers all properties of an Atomic Measurement**  
 332 **Resource Type**

333 In OCF-BLE mapping, a Service can be mapped to multiple OCF Resources and “a Characteristic” in  
 334 a Service can be mapped to Properties in multiple OCF Resources. In general “Value of a  
 335 Characteristic” is a byte stream (see below figure, below byte stream is a value of “blood pressure  
 336 measurement Characteristic”). Usually “value of a Characteristic” includes multiple fields like below  
 337 example and each field can be mapped to a property of OCF Resource.



338  
339 **Figure 13 Value of blood pressure measurement Characteristic**

340 For blood pressure device, “blood pressure measurement Characteristic” can cover all properties in  
 341 bloodpressuremonitor-am. So if BLE GATT client (OCF-BLE Bridge Platform) uses “Read  
 342 Characteristic Value” operation, it can get all values corresponding to all properties in  
 343 bloodpressuremonitor-am at one time (atomic operation).



344 *Figure 4.8: Read Characteristic Value example*

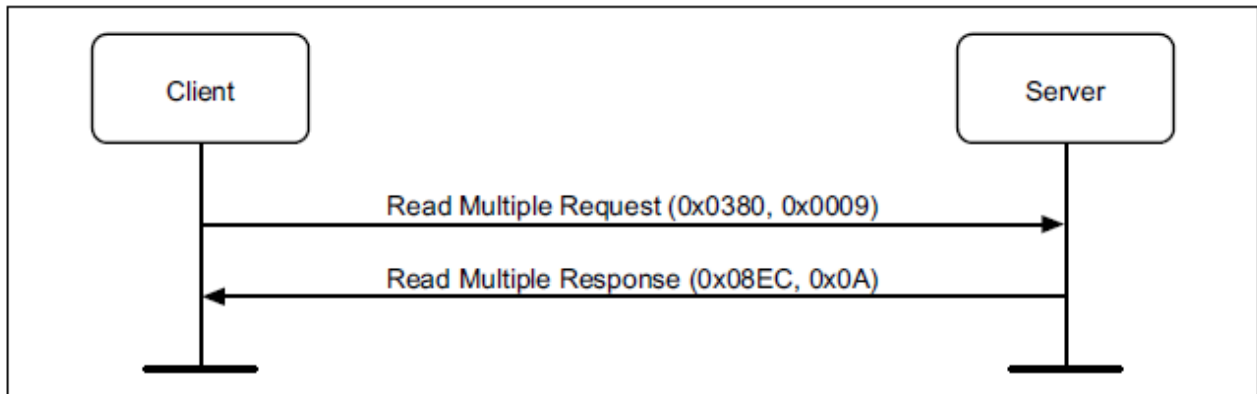
345

346  
347

**B.3 Case 2. Multiple Characteristics cover all properties of an Atomic Measurement Resource Type**

348  
349  
350  
351

For glucose meter, 2 Characteristics (glucose measurement Characteristic, glucose measurement context Characteristic) cover all properties in glucosemeter-am. In this case, a BLE GATT client (OCF-BLE Bridge Platform) can use “Read Multiple Characteristic Values” operation to get multiple Characteristic values at one time.



352

*Figure 4.11: Read Multiple Characteristic Values example*

353  
354  
355

However, some BLE GATT server may not support all operations except for “Notification”. In this case, a Characteristic value includes “sequence number” field, so BLE GATT client (OCF-BLE Bridge Platform) can make a set of values which are measured at the same time by using it.

356

Below examples are 2 Characteristics of glucose Service.

MSB						LSB	
Sensor Status Announcement	Sample Location	Type	Glucose Concentration (kg/L or mol/L)	Time Offset	Base Time	Sequence Number	Flags
2 bytes	4 bits	4 bits	2 bytes	2 bytes	7 bytes	2 bytes	1 byte

357

358

**Figure 14 Value of glucose measurement Characteristic**

MSB											LSB	
HbA1c	Medication (kilograms or liter)	Medication ID	Exercise Intensity	Exercise Duration	Health	Tester	Meal	Carbohydrate (kilograms)	Carbohydrate ID	Extended Flags	Sequence Number	Flags
2 bytes	2 bytes	1 byte	1 byte	2 bytes	4 bits	4 bits	1 byte	2 bytes	1 bytes	1 bytes	2 bytes	1 byte

359

360

**Figure 15 Value of glucose measurement context Characteristic**

361

DRAFT