

**OCF 2.3 – Defining Owned and Unowned – Sec WG CR 2665**

## Legal Disclaimer

THIS IS A DRAFT SPECIFICATION DOCUMENT ONLY AND HAS NOT BEEN ADOPTED BY THE OPEN CONNECTIVITY FOUNDATION. THIS DRAFT DOCUMENT MAY NOT BE RELIED UPON FOR ANY PURPOSE OTHER THAN REVIEW OF THE CURRENT STATE OF THE DEVELOPMENT OF THIS DRAFT DOCUMENT. THE OPEN CONNECTIVITY FOUNDATION AND ITS MEMBERS RESERVE THE RIGHT WITHOUT NOTICE TO YOU TO CHANGE ANY OR ALL PORTIONS HEREOF, DELETE PORTIONS HEREOF, MAKE ADDITIONS HERETO, DISCARD THIS DRAFT DOCUMENT IN ITS ENTIRETY OR OTHERWISE MODIFY THIS DRAFT DOCUMENT AT ANY TIME. YOU SHOULD NOT AND MAY NOT RELY UPON THIS DRAFT DOCUMENT IN ANY WAY, INCLUDING BUT NOT LIMITED TO THE DEVELOPMENT OF ANY PRODUCTS OR SERVICES. IMPLEMENTATION OF THIS DRAFT DOCUMENT IS DONE AT YOUR OWN RISK AMEND AND IT IS NOT SUBJECT TO ANY LICENSING GRANTS OR COMMITMENTS UNDER THE OPEN CONNECTIVITY FOUNDATION INTELLECTUAL PROPERTY RIGHTS POLICY OR OTHERWISE. IN CONSIDERATION OF THE OPEN CONNECTIVITY FOUNDATION GRANTING YOU ACCESS TO THIS DRAFT DOCUMENT, YOU DO HEREBY WAIVE ANY AND ALL CLAIMS ASSOCIATED HERewith INCLUDING BUT NOT LIMITED TO THOSE CLAIMS DISCUSSED BELOW, AS WELL AS CLAIMS OF DETRIMENTAL RELIANCE.

The OCF logo is a trademark of Open Connectivity Foundation, Inc. in the United States or other countries. \*Other names and brands may be claimed as the property of others.

Copyright © 2018 Open Connectivity Foundation, Inc. All rights reserved.

Copying or other form of reproduction and/or distribution of these works are strictly prohibited.

**\*\*\*\*\* Section 3.1 Terms and Definitions (New Text) \*\*\*\*\***

**3.1.X**

**Owned (or "in Owned State")**

Having the "owned" Property of the /oic/sec/doxm resource equal to "TRUE"

**3.1.X**

**Unowned (or "in Unowned State")**

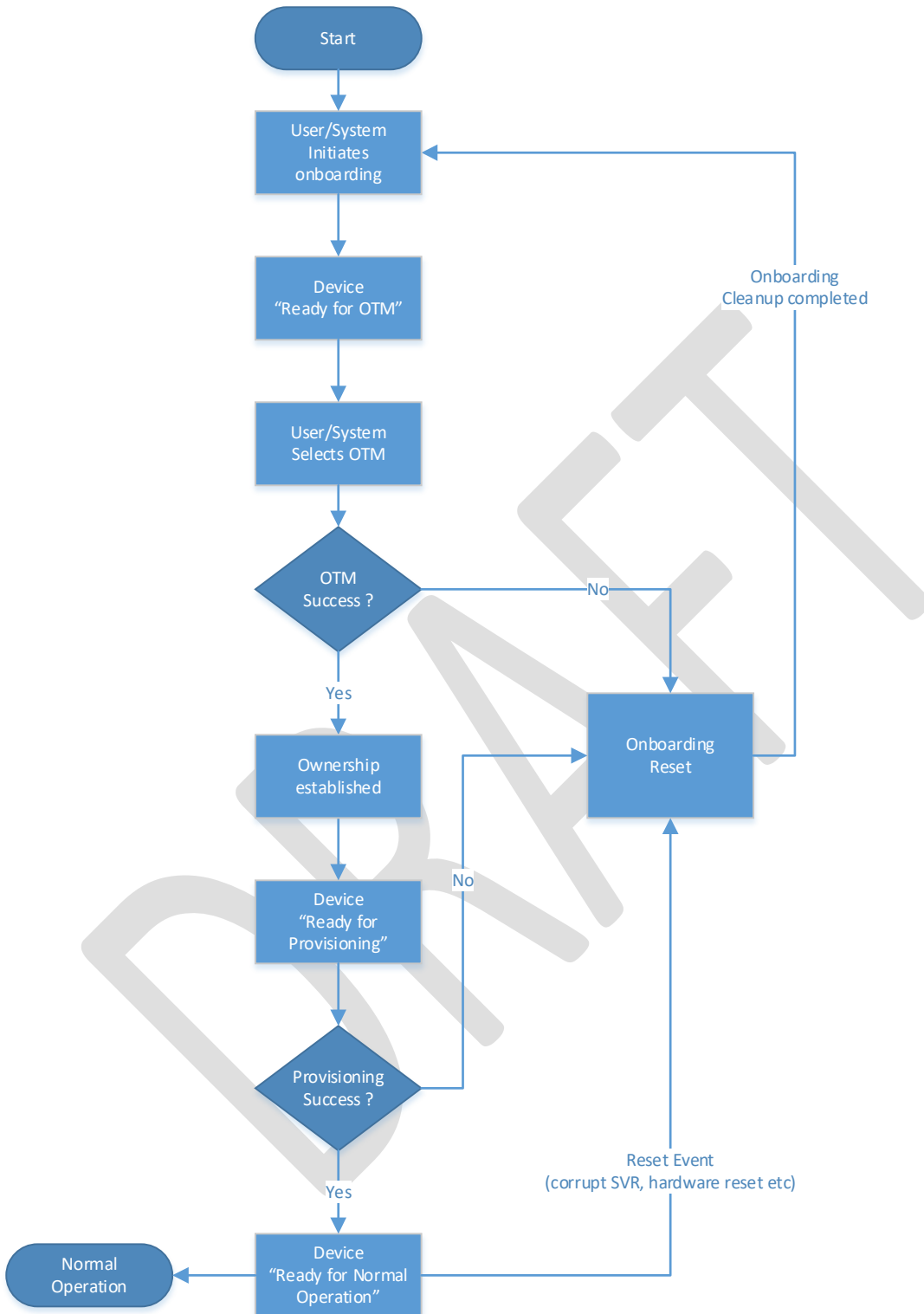
Having the "owned" Property of the /oic/sec/doxm resource equal to "FALSE"

**\*\*\*\*\* End of Change \*\*\*\*\***

**\*\*\*\*\* Section 5.2.1 OnBoarding Steps \*\*\*\*\***

Onboarding typically begins with the Device becoming an Owned Device, followed by configuring the Device for the environment that it will operate in. This would include setting information such as who can access the Device and what actions can be performed as well as what permissions the Device has for interacting with other Devices

DRAFT



\*\*\*\*\* End of Change \*\*\*\*\*

\*\*\*\*\* Section 7.2 Device Ownership \*\*\*\*\*

This is an informative section. Devices are logical entities that are security endpoints that have an identity that is authenticable using cryptographic credentials. A Device is Unowned when it is first initialized. Establishing device ownership is a process by which the device asserts its identity to the DOTS and the DOTS provisions an owner identity. This exchange results in the device changing its ownership state, thereby preventing a different DOTS from asserting administrative control over the device.

The ownership transfer process starts with the OBT discovering a new device that is in Unowned state through examination of the "Owned" Property of the /oic/sec/doxm Resource of the new device.

\*\*\*\*\* **End of Change** \*\*\*\*\*

DRAFT