

OCF Device Specification

VERSION 2.0 | June 22, 2018



OPEN CONNECTIVITY
FOUNDATION®

CONTACT admin@openconnectivity.org
Copyright OCF © 2018. All Rights Reserved.

Legal Disclaimer

3
4
5 NOTHING CONTAINED IN THIS DOCUMENT SHALL BE DEEMED AS GRANTING YOU ANY
6 KIND OF LICENSE IN ITS CONTENT, EITHER EXPRESSLY OR IMPLIEDLY, OR TO ANY
7 INTELLECTUAL PROPERTY OWNED OR CONTROLLED BY ANY OF THE AUTHORS OR
8 DEVELOPERS OF THIS DOCUMENT. THE INFORMATION CONTAINED HEREIN IS PROVIDED
9 ON AN "AS IS" BASIS, AND TO THE MAXIMUM EXTENT PERMITTED BY APPLICABLE LAW,
10 THE AUTHORS AND DEVELOPERS OF THIS SPECIFICATION HEREBY DISCLAIM ALL OTHER
11 WARRANTIES AND CONDITIONS, EITHER EXPRESS OR IMPLIED, STATUTORY OR AT
12 COMMON LAW, INCLUDING, BUT NOT LIMITED TO, IMPLIED WARRANTIES OF
13 MERCHANTABILITY OR FITNESS FOR A PARTICULAR PURPOSE. OPEN CONNECTIVITY
14 FOUNDATION, INC. FURTHER DISCLAIMS ANY AND ALL WARRANTIES OF NON-
15 INFRINGEMENT, ACCURACY OR LACK OF VIRUSES.

16 The OCF logo is a trademark of Open Connectivity Foundation, Inc. in the United States or other
17 countries. *Other names and brands may be claimed as the property of others.

18 Copyright © 2016-2018 Open Connectivity Foundation, Inc. All rights reserved.

19 Copying or other form of reproduction and/or distribution of these works are strictly prohibited.
20

CONTENTS

21			
22			
23	1	Scope	6
24	2	Normative references	6
25	3	Terms, definitions symbols and abbreviations.....	6
26	3.1	Terms and definitions	6
27	3.2	Symbols and abbreviations.....	7
28	3.3	Conventions	8
29	4	Document conventions and organization.....	8
30	4.1	Notation.....	8
31	4.2	Data types	9
32	4.3	Document structure.....	9
33	5	Operational Scenarios	10
34	5.1	Specification Version.....	10
35	6	Core Resource model.....	10
36	6.1	Introduction.....	10
37	6.2	Device Type	10
38	6.3	Profile of OCF Core Specification.....	11
39	7	Modelling of Multiple Logical Devices	12
40	7.1	Introduction.....	12
41	7.2	Single Platform Model.....	12
42	7.3	Multi-Platform Model	12
43	7.4	Composite Device Model	12
44	8	Discovery	14
45	8.1	Endpoint Discovery.....	14
46	8.2	Resource Discovery	14
47	9	Security	14
48		Annex A Device Categories and Device Types	16
49	A.1	Device Categories	16
50	A.2	Device Types.....	16
51		Annex B Smart Home Device Types	24
52	B.1	Smart Home Required Resources per Device Type	24
53	B.2	Standardized enumeration values.....	28
54	B.2.1	Alphabetical list of standardized enumeration types	28
55	B.2.2	Standardized list of supported values for Mode Resource Type (oic.r.mode).....	31
56	B.2.3	Standardized list of supported values for Operational State Resource Type (oic.r.operational.state).....	33
57	B.2.4	Standardized list of supported values for Consumable and Consumable Collection Resource Types (oic.r.consumable, oic.r.consumablecollection)...	34
58			
59	B.3	Camera Media Format (oic.r.media)	35
60	B.4	Additional Requirements per Device Type	36
61		Annex C Healthcare Device Types	37
62			
63			

64	C.1	Scope.....	37
65	C.2	Introduction to OCF healthcare devices	37
66	C.3	Operational scenarios.....	37
67	C.4	Standardized Device Types	37
68	C.4.1	Blood Pressure Monitor	39
69	C.4.2	Glucose Meter.....	39
70	C.4.3	Body Scale.....	40
71	C.4.4	Body Thermometer.....	41
72	Annex D	Industrial Device Types	43
73	D.1	Operational Scenarios	43
74	D.2	Industrial Required Resources per Device Type	46
75			
76			

77		Figures	
78	Figure 1 Device building blocks.....		10
79	Figure 2 Example Composite Device Model.....		13
80	Figure 3 RETRIEVE response to Example Door from Composite Device Model.....		14
81	Figure 4 Example of mode transitions of a Dryer.....		32
82	Figure 5 Example of mode transitions of a Printer.....		34
83	Figure 6 Schematic diagram of healthcare usages.....		37
84	Figure 7 Normal process scheme of optical augmented RFID in smart factory		
85	environment.....		44
86	Figure 8 Abnormal process scheme of optical augmented RFID in smart factory		
87	environment.....		45
88			

Tables

89		
90	Table 1 Required Resources for Devices.....	11
91	Table 2 Required Properties in Resource	11
92	Table 3 List of device categories	16
93	Table 4 Per Category list of Device Types	17
94	Table 5 Alphabetical list of Device Types (“rt”), including required Resources for Smart	
95	Home.....	24
96	Table 6 list of required oic.r.mode supported values per Device Type (“rt”).....	32
97	Table 7 list of required oic.r.operational.state supported values per Device Type (“rt”)	33
98	Table 8 list of defined enumeration values for oic.r.consumable,	
99	oic.r.consumablecollection.....	35
100	Table 9 Recommended media profiles.	36
101	Table 10 Alphabetical list of Healthcare Device Types	38
102	Table 11 Commonly used Resource Types of Healthcare Device Types	38
103	Table 12 Healthcare Device Type of blood pressure monitor.....	39
104	Table 13 Atomic Measurement of blood pressure monitor	39
105	Table 14 Healthcare Device Type of glucose meter.....	39
106	Table 15 Atomic Measurement of glucose meter.....	39
107	Table 16 Healthcare Device Type of body scale.....	40
108	Table 17 Atomic Measurement type of body scale	41
109	Table 18 Healthcare Device Type of body thermometer.....	41
110	Table 19 Atomic Measurement type of body thermometer	42
111	Table 20 Alphabetical list of Device Types (“rt”), including required Resources for	
112	Industrial	46
113		
114		

115 **1 Scope**

116 The OCF Device specification is an Application Profile specification.

117 The Device definitions use Resource definitions from the OCF Resource Type Specification.

118 The Device Specification is built on top of the Core Specification. The Core Specification specifies
119 the core architecture, interfaces protocols and services to enable the implementation of profiles
120 for IoT usages and ecosystems. The Core specification also defines the main architectural
121 components of network connectivity, discovery, data transmission, device & service management
122 and ID & security. The core architecture is scalable to support simple devices (constrained devices)
123 and more capable devices (smart devices).

124 **2 Normative references**

125 The following documents, in whole or in part, are normatively referenced in this document and are
126 indispensable for its application. For dated references, only the edition cited applies. For undated
127 references, the latest edition of the referenced document (including any amendments) applies.

128 OCF Core Specification, *Open Connectivity Foundation Core Specification*, Version 1.3.

129 Available at: https://openconnectivity.org/specs/OCF_Core_Specification_v1.3.0.pdf

130 Latest version available at https://openconnectivity.org/specs/OCF_Core_Specification.pdf

131 OCF Resource Type Specification, *Open Connectivity Foundation Resource Type Specification*,
132 Version 1.3. Available at:

133 https://openconnectivity.org/specs/OCF_Resource_Type_Specification_v1.3.0.pdf

134 Latest version available at

135 https://openconnectivity.org/specs/OCF_Resource_Type_Specification.pdf

136 OCF Security Specification, *Open Connectivity Foundation Security Capabilities*, Version 1.3

137 Available at: https://openconnectivity.org/specs/OCF_Security_Specification_v1.3.0.pdf

138 Latest version available at https://openconnectivity.org/specs/OCF_Security_Specification.pdf

139 IETF RFC 7049, *Concise Binary Object Representation (CBOR)*, October 2013

140 <http://www.ietf.org/rfc/rfc7049.txt>

141

142 IETF RFC 7159, *The JavaScript Object Notation (JSON) Data Interchange Format*, March 2014

143 <http://www.ietf.org/rfc/rfc7159.txt>

144 RAML, *Restful API modelling language*, Version 0.8.

145 <https://github.com/raml-org/raml-spec/blob/master/raml-0.8.md>

146 IETF RFC 4566, SDP: Session Description Protocol, July 2006

147 <https://tools.ietf.org/html/rfc4566>

148 Draft Report: A Basic Classification System for Energy-Using Products--Universal Device
149 Classification, December 2013

150 <https://eta-intranet.lbl.gov/sites/default/files/lbnl-classification-v1.pdf>

151 **3 Terms, definitions symbols and abbreviations**

152 **3.1 Terms and definitions**

153 **3.1.1**

154 **Actuator**

155 Resource with support of the UPDATE operation.

156 **3.1.2**
157 **Bridge Device**
158 A Device that is capable of representing other devices that exist on the network.

159 **3.1.3**
160 **OCF Device**
161 A Device that is conformant to the normative requirements contained in this specification.

162 **3.1.4**
163 **Sensor**
164 Resource without support of the UPDATE operation.

165 **3.1.5**
166 **Healthcare Device**
167 A Device that is conformant to the normative requirements contained in Annex C of this
168 specification.

169 **3.2 Symbols and abbreviations**

170 **3.2.1**
171 **CRUDN**
172 Create Retrieve Update Delete Notify
173 This is an acronym indicating which operations are possible on the Resource.

174 **3.2.2**
175 **CSV**
176 Comma Separated Value
177 Comma Separated Value is a construction to have more fields in 1 string separated by commas. If
178 a value itself contains a comma then the comma can be escaped by adding “\” in front of the
179 comma.

180 **3.2.3**
181 **OCF**
182 Open Connectivity Foundation
183 The organization that created these specifications.

184 **3.2.4**
185 **RAML**
186 RESTful API Modelling Language
187 RAML is a simple and succinct way of describing practically-RESTful APIs. See RAML.

188 **3.2.5**
189 **REST**
190 Representational State Transfer
191 REST is an architecture style for designing networked applications and relies on a stateless, client-
192 server, cacheable communications protocol.

193 **3.2.6**
194 **SDP**
195 Session Description Protocol
196 SDP describes multimedia sessions for the purposes of session announcement, session invitation,
197 and other forms of multimedia session initiation. It is fully defined in IETF RFC 4566.

198 **3.2.7**
199 **UDC**
200 Universal Device Classification
201 An enumeration of device types published as A Basic Classification System for Energy-Using
202 Products--Universal Device Classification

203 **3.3 Conventions**

204 In this specification a number of terms, conditions, mechanisms, sequences, parameters, events,
205 states, or similar terms are printed with the first letter of each word in uppercase and the rest
206 lowercase (e.g., Network Architecture). Any lowercase uses of these words have the normal
207 technical English meaning.

208 **4 Document conventions and organization**

209 This document lists all the Devices used in identified vertical domains, as of this Specification that
210 encompasses the Smart Home. The devices are specified by which mandatory and optional
211 Resources are used.

212 For the purposes of this document, the terms and definitions given in OCF Core Specification and
213 OCF Resource Type Specification apply.

214 **4.1 Notation**

215 In this document, features are described as required, recommended, allowed or DEPRECATED as
216 follows:

217 Required (or shall or mandatory).

218 These basic features shall be implemented. The phrases “shall not”, and “PROHIBITED”
219 indicate behavior that is prohibited, i.e. that if performed means the implementation is not in
220 compliance.

221 Recommended (or should).

222 These features add functionality supported by a Device and should be implemented.
223 Recommended features take advantage of the capabilities a Device, usually without imposing
224 major increase of complexity. Notice that for compliance testing, if a recommended feature is
225 implemented, it shall meet the specified requirements to be in compliance with these guidelines.
226 Some recommended features could become requirements in the future. The phrase “should
227 not” indicates behavior that is permitted but not recommended.

228 Allowed (or allowed).

229 These features are neither required nor recommended by a Device, but if the feature is
230 implemented, it shall meet the specified requirements to be in compliance with these guidelines.

231 Conditionally allowed (CA).

232 The definition or behaviour depends on a condition. If the specified condition is met, then the
233 definition or behaviour is allowed, otherwise it is not allowed.

234 Conditionally required (CR).

235 The definition or behaviour depends on a condition. If the specified condition is met, then the
236 definition or behaviour is required. Otherwise the definition or behaviour is allowed as default
237 unless specifically defined as not allowed.

238 DEPRECATED

239 Although these features are still described in this specification, they should not be implemented
240 except for backward compatibility. The occurrence of a deprecated feature during operation of
241 an implementation compliant with the current specification has no effect on the
242 implementation’s operation and does not produce any error conditions. Backward compatibility
243 may require that a feature is implemented and functions as specified but it shall never be used
244 by implementations compliant with this specification.

245 Strings that are to be taken literally are enclosed in “double quotes”.

246 Words that are emphasized are printed in *italic*.

247 **4.2 Data types**

248 See OCF Core Specification.

249 **4.3 Document structure**

250 This document describes specific requirements governing the indication of Device Types on
251 Devices and the requirements that are associated with specific Device Types themselves. The
252 document makes use of functionality defined in the OCF Core Specification and OCF Resource
253 Type Specification.

254 The OCF Core Specification provides building blocks to define Devices. The following functionality
255 is used:

- 256 • Required Core Resources.
- 257 • Required transports.

258 Note that other mandatory functions in the OCF Core Specification might be needed to create an
259 OCF compliant device, but are not mentioned in this document.

260 The Device profile consists of using RAML as a specification language and using JSON Schemas
261 as payload definitions for all CRUDN actions. The mapping of the CRUDN actions is specified in
262 the CORE.

263 Other building blocks used in this document are the Resource Types specified in the OCF
264 Resource Type Specification.

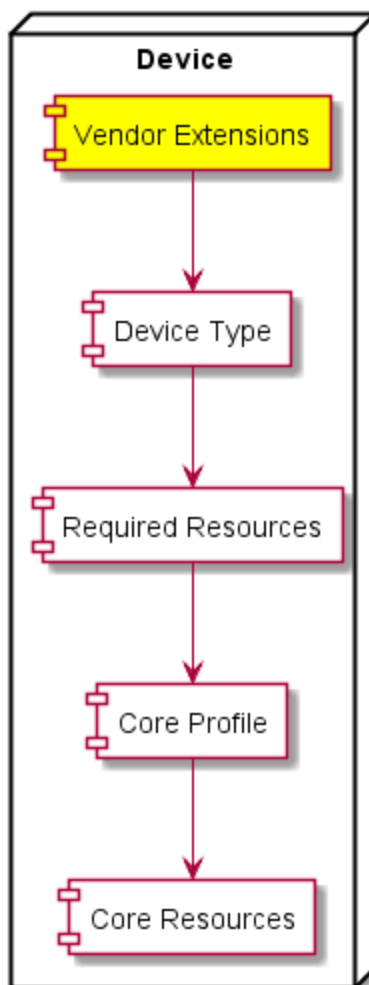


Figure 1 Device building blocks.

265
266

267

268 This document describes which constructs are used for a Device and which Resources are
269 mandated to be implemented for each Device. A typical Device consisting of data elements defined
270 in the referenced specification documents is depicted in Figure 1.

271 **5 Operational Scenarios**

272 **5.1 Specification Version**

273 All Devices conformant to this specification version shall add the string “ocf.sh.1.3.0” to the dmV
274 Property in oic.wk.d. This Property is for legacy Device support only and will no longer be revised
275 in alignment with specification versions.

276 **6 Core Resource model**

277 **6.1 Introduction**

278 The Core Resource model is described in the OCF Core Specification.

279 **6.2 Device Type**

280 The Device Types of all devices shall have a Resource Type name (“rt”) prefixed with “oic.d.”

281 Examples of Device Types are:

- 282 • oic.d.fan
- 283 • oic.d.thermostat

284 The full list of defined Device names and types are in Table 4. Annex B and Annex C detail the
285 minimal Resource(s) that a Device shall implement for a specific Device Type where required by
286 a vertical. A Device may expose additional OCF and 3rd party defined Resources other than those
287 indicated in these Annexes.

288 The OCF Core Specification defines a Device Resource with a URI of “/oic/d”. A Device shall
289 include in the “Resource type” Property of “/oic/d” the Device Type (or Device Types) from Table
290 4 of the physical device hosting the Server; the inclusion of the Device Type shall be done using
291 one of the methods provided by Section 11.3.4 of the OCF Core Specification (i.e. add to the array
292 of values).

293 Therefore a Device may be discovered by adding a query for the “rt” of the Device Type itself (e.g.
294 “?rt=oic.d.fan”) to the multicast Endpoint discovery method (see Section 8.1).

295 **6.3 Profile of OCF Core Specification**

296 This section describes the profiling of the Core Resources and transport mechanisms and functions
297 that are defined in the OCF Core Specification.

298 The required OCF Core Specification Resources are also required for a profile implementation.

299 In addition to the required Resources the optional OCF Core Specification Resources in Table 1
300 shall be required.

301 **Table 1 Required Resources for Devices**

Resource (“rt”)	Required in Profile
Intentionally left blank	Intentionally left blank

302 For each of the Resources listed in Table 1, Table 2 details the Properties within those Resources
303 that shall be required.

304 **Table 2 Required Properties in Resource**

Resource (“rt”)	Property name	Required in Profile
Intentionally left blank	Intentionally left blank	Intentionally left blank

305
306 A Device shall support CoAP based endpoint discovery as defined in Section 10.2 of the OCF Core
307 Specification.

308 The messaging protocol for a Device shall be CoAP (see OCF Core Specification).

309 A Device shall support a network layer as defined in Section 9 of the OCF Core Specification
310 including any necessary defined bridging functions that ensure inter-operability with IPv6.

311 **7 Modelling of Multiple Logical Devices**

312 **7.1 Introduction**

313 A physical Device may be modelled as a single Platform and Device, a single Platform with multiple
314 Devices, multiple separately discoverable discrete Platforms and Devices, or as a single Platform
315 and Device where the Device is represented as a composition of other Devices.

316 For example, a door that includes the functionality of a contact sensor, a lock and a camera may
317 be modeled as a single-Platform, a multi-Platform, or a Composite Device. Each of these three
318 options will be detailed in the following Sections.

319 **7.2 Single Platform Model**

320 The physical Device exposes one or more logical Devices that are independently discoverable (i.e.
321 they separately respond to multicast discovery request messages as defined in Section 11.3 of the
322 OCF Core Specification). Given the door example there could be a single discovery response with
323 an instance of "/oic/d" that exposes a single Device Type (such as "oic.d.door") or multiple
324 discovery responses, each response having a single Device Type in the "rt" of "/oic/d" that
325 represents the logical Device. The common denominator being that for all discovered logical
326 Devices the Properties of "/oic/p" have the same values.

327 **7.3 Multi-Platform Model**

328 Just like the single-Platform model, one or more logical Devices that make up a physical Device
329 respond independently to multicast discovery request messages and expose their own Resources.
330 Like the single-platform model, each logical Device exposes a single Device Type in the "rt" value
331 of "/oic/d". The difference from the single-platform model is that each logical Device does not have
332 the same values for the Properties of "oic/p".

333 **7.4 Composite Device Model**

334 When modelling a Server as a Composite Device there shall be a single Platform which represents
335 the Composite Device. The Resource Type Property Value of "/oic/d" exposed should contain all
336 of the Device Types of the Devices that compose the Composite Device. For each Device that is
337 part of the Composite Device when using this approach there shall exist a Collection that
338 represents one of the distinct Devices in the composition. Further each Collection shall have a
339 Resource Type that at a minimum includes the Device Type that the Collection represents (e.g.
340 ["/oic.d.door"]).

341 Figure 2 Example Composite Device Model illustrates the response to a discovery request using
342 the baseline Interface on "/oic/res" for a Composite Device modeled as described in this Section.
343 Figure 3 RETRIEVE response to Example Door from Composite Device Model illustrates the
344 response to a unicast RETRIEVE request using the baseline Interface to the Collection that
345 represents the door Device.

346

```

[
  {
    "rt": ["oic.wk.res"],
    "if": ["oic.if.baseline", "oic.if.ll" ],
    "links":
      [
        {
          "anchor": "ocf://dc70373c-1e8d-4fb3-962e-017eaa863989",
          "href": "/oic/d",
          "rt":
["oic.wk.d","oic.d.door","oic.d.sensor","oic.d.lock","oic.d.camera"]
        },
        {
          "if": ["oic.if.r","oic.if.baseline"],
          "p": {"bm": 3},
          "eps": [{"ep": "coap://[fe80::b1d6]:1111"}]
        },
        {
          "anchor": "ocf://dc70373c-1e8d-4fb3-962e-017eaa863989",
          "href": "/mydevice/mydoor",
          "rt": ["oic.d.door"],
          "if": ["oic.if.ll","oic.if.baseline","oic.if.r"],
          "p": {"bm": 3},
          "eps": [{"ep": "coaps://[fe80::b1d6]:1111"}]
        },
        {
          "anchor": "ocf://dc70373c-1e8d-4fb3-962e-017eaa863989",
          "href": "/mydevice/mysensor",
          "rt": ["oic.d.sensor"],
          "if": ["oic.if.ll","oic.if.baseline","oic.if.r"],
          "p": {"bm": 3},
          "eps": [{"ep": "coaps://[fe80::b1d6]:1111"}]
        },
        {
          "anchor": "ocf://dc70373c-1e8d-4fb3-962e-017eaa863989",
          "href": "/mydevice/mylock",
          "rt": ["oic.d.lock"],
          "if": ["oic.if.ll","oic.if.baseline","oic.if.r"],
          "p": {"bm": 3},
          "eps": [{"ep": "coaps://[fe80::b1d6]:1111"}]
        },
        {
          "anchor": "ocf://dc70373c-1e8d-4fb3-962e-017eaa863989",
          "href": "/mydevice/mycamera",
          "rt": ["oic.d.camera"],
          "if": ["oic.if.ll","oic.if.baseline","oic.if.r"],
          "p": {"bm": 3},
          "eps": [{"ep": "coaps://[fe80::b1d6]:1111"}]
        }
      ]
  }
]

```

Figure 2 Example Composite Device Model

347

348

349

```

{
  "rt": ["oic.d.door"],
  "if": ["oic.if.ll", "oic.if.r", "oic.if.baseline"],
  "id": "unique_example_id",
  "di": "dc70373c-1e8d-4fb3-962e-017eaa863989",
  "icv": "ocf.1.3.0",
  "dmv": "ocf.res.1.3.0, ocf.sh.1.3.0",
  "piid": "6F0AAC04-2BB0-468D-B57C-16570A26AE48",
  "links": [
    {
      "href": "/mydoor/openlevel",
      "rt": ["oic.r.openlevel"],
      "if": ["oic.if.a", "oic.if.baseline"],
      "p": {"bm": 2},
      "eps": [
        {"ep": "coaps://[fe80::b1d6]:1122"}
      ]
    }
  ]
}

```

351 **Figure 3 RETRIEVE response to Example Door from Composite Device Model**

352 **8 Discovery**

353 **8.1 Endpoint Discovery**

354 Clients may discover Servers by using the mechanisms defined by the OCF Core Specification
 355 Section 10. A Client may populate an “rt” query parameter with the Device Types that the Client
 356 wants to discover, or if no “rt” query parameter is provided then the search is for all available
 357 Device Types irrespective.

358 Devices may be discovered by Device Type or implemented Resource Type. This difference is
 359 conveyed by the population of any “rt” query parameter included as part of discovery (see section
 360 11.3 of the OCF Core Specification).

361 The values that may be used for discovering a specific Device Type are listed in Table 4. The
 362 values that may be used to discover a specific Resource Type are listed in the OCF Resource
 363 Type Specification in Section 6 of that document.

364 The discovery process provides the base URI of the Device that is acting as a Server to the Client.
 365 The structure of the detected Device can then be retrieved by Resource Discovery.

366 **8.2 Resource Discovery**

367 Section intentionally left blank

368 **9 Security**

369 A Device shall implement the mandated Security Virtual Resources specified in the OCF Security
 370 Specification. Additionally, all exposed OCF Resource Type Specification defined Resources shall
 371 be accessible via at least one secure Endpoint (i.e. use of a “coaps” or “coaps+tcp” scheme locator
 372 within the “eps” Parameter exposed by /oic/res; see Core Specification Section 10.2.4). A Device
 373 shall not expose OCF Resource Type Specification defined Resources using unsecured Endpoints
 374 (i.e. “coap” or “coap+tcp” scheme locator in the “eps” Parameter).

375 With the exception of those Resources related to Discovery that are explicitly identified by the
376 OCF Core Specification as not requiring secured access (see OCF Core Specification Section
377 11.3.4), all other Resources defined in the OCF Core Specification implemented in the Smart
378 Home Device shall be accessible via at least one secure Endpoint (i.e. use of a “coaps” or
379 “coaps+tcp” scheme locator within the “eps” Parameter exposed by /oic/res). Similarly, any
380 Resources defined in the OCF Core Specification that do not require unsecured access that are
381 not listed in /oic/res shall also be accessible via “coaps” or “coaps+tcp”.

382

Annex A Device Categories and Device Types

A.1 Device Categories

Devices are grouped into Device Categories based on the Universal Device Classification (UDC) (see A Basic Classification System for Energy-Using Products--Universal Device Classification), all Device Categories are listed in Table 3.

Table 3 List of device categories

Device Category Name	Description
Space Conditioning	Heating and cooling systems
Lighting	
Appliance	Also known as “white goods”; covers major appliances only.
Electronics	Personal electronics
Miscellaneous	Small appliances, other
Infrastructure	Physical building and infrastructure
Transportation	Vehicles, fixed devices that provide movement (e.g. Escalators)
Fitness	Includes lifestyle
Medical	
Personal Health	
Other	

A.2 Device Types

The complete Universal Device Classification with Device Types per Device Category is provided in Table 4. Note that not all Devices within the UDC classification have equivalent OCF defined Device Types. All defined Device Types are of the form “oic.d.<thing>” where <thing> is a single alphanumeric string (lower case [a..z],[0..9] only) no more than 24 characters in length giving a

395 total maximum length of the Device Type of 32 characters. Where an abbreviated form of the
 396 Device Type is required (applicable only to population of a WiFi beacon IE) then the “oic.d.” portion
 397 of the Device Type may be omitted.

398 Table 4 does not specify the mandatory resources that are implemented by an instance of such a
 399 Device Type; the set of applicable mandatory Resources is dependent on the application domain.
 400 In this version of the specification the following domains are specified: Smart Home, Healthcare.
 401 The ‘Reference’ column in the table references vertical specific annexes where the Device Type
 402 is further refined (e.g. mandatory Resources).

403

Table 4 Per Category list of Device Types

Device Category Name	UDC Device Name	Device Name	Device (Normative) Type	Reference
Space Conditioning	Unitary System	Air Conditioner	oic.d.airconditioner	B.1
	Boiler	Water Heater	oic.d.waterheater	B.1
	Furnace	Furnace	oic.d.furnace	
	Pump	Pump	oic.d.pump	
	Fan	Fan	oic.d.fan	B.1
	Condensing Unit	Condensing Unit	oic.d.condensingunit	
	Condenser	Condenser	oic.d.condenser	
	Humidifier	Humidifier	oic.d.humidifier	B.1
	Dehumidifier	Dehumidifier	oic.d.dehumidifier	B.1
	HVAC Control -	Thermostat	oic.d.thermostat	B.1
	HVAC Other -	HVAC	oic.d.hvac	
		Air Purifier	oic.d.airpurifier	B.1
		Air Quality Monitor	oic.d.airqualitymonitor	B.1

Lighting	Lighting Controls	- Lighting Controls	oic.d.lightingcontrol	
	Lighting Other	- Light	oic.d.light	B.1
Appliance	Clothes Dryer	Dryer (Laundry)	oic.d.dryer	B.1
	Clothes Washer	Washer (Laundry)	oic.d.washer	B.1
		Clothes Washer Dryer	oic.d.washerdryer	B.1
	Dishwasher	Dishwasher	oic.d.dishwasher	B.1
	Freezer	Freezer	oic.d.freezer	B.1
	Ice Machine	Ice Machine	oic.d.icemachine	
	Oven	Oven	oic.d.oven	B.1
	Range	Range	oic.d.range	
	Refrigerator	Refrigerator	oic.d.refrigerator	B.1
	Water Heater	Water Heater	oic.d.waterheater	B.1
	Appliance - Other	Cooker Hood	oic.d.cookerhood	B.1
		Cooktop	oic.d.cooktop	B.1
		Steam Closet	oic.d.steamcloset	B.1
Electronics	Audio System	Audio System	oic.d.audiosystem	
	A/V Player	AV Player	oic.d.avplayer	

	Camera	Camera	oic.d.camera	B.1
	Computer – Desktop	Desktop PC	oic.d.desktoppc	
	Computer - Notebook	Notebook PC	oic.d.notebookpc	
	Computer - Server	Server	oic.d.server	
	Computer – Other	Computer	oic.d.pc	
	Data Storage	Data Storage Unit	oic.d.datastorageunit	
	Display	Display	oic.d.display	
	Electronics - Portable	Portable Electronics	oic.d.portableelectronics	
	Game Console	Game Console	oic.d.gameconsole	
	Imaging Equipment	3D Printer	oic.3d.printer	B.1
		Printer	oic.d.printer	B.1
		Printer Multi-Function	oic.d.multifunctionprinter	B.1
		Scanner	oic.d.scanner	B.1
	Musical Instrument	Musical Instrument	oic.d.musicalinstrument	
	Networking Equipment	Networking Equipment	oic.d.networking	
	Phone Handset	Handset	oic.d.handset	
	Receiver	Receiver	oic.d.receiver	B.1
	Set Top Box	Set Top Box	oic.d.stb	B.1

	Telephony	Telephony	oic.d.telephonydevice	
	Television	Television	oic.d.tv	B.1
	A/V - Other	Active Speaker	oic.d.speaker	
	Electronics – Other	Electronics	oic.d.smallelectrical	
Miscellaneous	Air Compressors	Air Compressor	oic.d.aircompressor	
	Bathroom Device	Bathroom General	oic.d.bathroomdevice	
	Battery Charger	Battery Charger	oic.d.batterycharger	
	Business Equipment	Business Equipment	oic.d.businessequipment	
	Cleaning Equipment	Robot Cleaner	oic.d.robotcleaner	B.1
	Cooking – Portable	Portable Stove	oic.d.portablestove	
	Exercise Machine	Exercise Machine	oic.d.exercisemachine	
	HVAC – Portable	Portable HVAC	oic.d.hvacportable	
	Industrial	Optical augmented RFID Reader	oic.d.orfid	D.1
	Kitchen	Coffee Machine	oic.d.coffeemachine	B.1
		Food Probe	oic.d.foodprobe	B.1
		Grinder	oic.d.grinder	B.1

		Kettle	oic.d.kettle	B.1
	Lighting – Decorative	Decorative Lighting	oic.d.lighdecorative	
	Lighting – Emergency	Emergency Lighting	oic.d.lightemergency	
	Microwave Oven	Microwave Oven	oic.d.microwave	B.1
	Vending Machine	Vending Machine	oic.d.vendingmachine	
	Water Dispenser	Water Dispenser	oic.d.waterdispenser	
		Battery	oic.d.battery	B.1
Infrastructu re	Breakers	Water Valve	oic.d.watervalve	B.1
	Doors/Wind ows	Blind	oic.d.blind	B.1
		Door	oic.d.door	B.1
		Garage Door	oic.d.garagedoor	B.1
		Smart Lock	oic.d.smartlock	B.1
		Window	oic.d.window	B.1
	Fireplace	Fireplace	oic.d.fireplace	
	Pump	Pump	oic.d.pump	
	Power Portable -	Energy Generator	oic.d.energygenerator	B.1
		Smart Plug	oic.d.smartplug	B.1
	Power Fixed -	Switch	oic.d.switch	B.1
	Security	Security Panel	oic.d.securitypanel	B.1

	Sensors	Generic Sensor	oic.d.sensor	B.1
	Meter	Electric Meter	oic.d.electricmeter	B.1
Transportation	Transport - Other	Electric Vehicle Charger	oic.d.electricvehiclecharger	B.1
Fitness	N/A	Fitness Device	oic.d.fitnessdevice	
		Blood Pressure Monitor	oic.d.bloodpressuremonitor	C.4
		Body Thermometer	oic.d.bodythermometer	C.4
Medical	N/A	Medical Device	oic.d.medicaldevice	
		Blood Pressure Monitor	oic.d.bloodpressuremonitor	C.4
		Glucose Meter	oic.d.glucosemeter	C.4
		Body Scale	oic.d.bodyscale	C.4
		Body Thermometer	oic.d.bodythermometer	C.4
Personal Health	N/A	Personal Health Device	oic.d.personalhealthdevice	

		Blood Pressure Monitor	oic.d.bloodpressuremonitor	C.4
		Glucose Meter	oic.d.glucosemeter	C.4
		Body Scale	oic.d.bodyscale	C.4
		Body Thermometer	oic.d.bodythermometer	C.4
Other	Other		oic.d.unknown	

404

405

Annex B Smart Home Device Types

B.1 Smart Home Required Resources per Device Type

407 Device Types may mandate that specific Resources be implemented. The required Resource per
 408 Device Type where mandated is listed in Table 5. Additionally, specific Resources that use
 409 enumeration values to indicate supported states or modes may mandate usage of standardized
 410 enumeration values. The mandated allowed values are indicated for each applicable Resource
 411 Type, the Property of interest on that Resource Type and to which Device Type it applies.

412 Per Table 5, some Device types support two instances of the same Resource Type. When this is
 413 the case, the Resources shall support different CRUDN actions, e.g. one Resource acts as a
 414 Sensor (CRUDN action write not supported) and the other Resource acts as an Actuator (CRUDN
 415 actions read and write supported at a minimum) unless otherwise specified.

416 **Table 5 Alphabetical list of Device Types (“rt”), including required Resources for Smart**
 417 **Home**

Device Name (informative)	Device Type (“rt”) (Normative)	Required Resource name	Required Resource Type
3D Printer	oic.d.3dprinter	Binary Switch	oic.r.switch.binary
		3D Printer	oic.r.printer.3d
		Operational State	oic.r.operational.state
		Temperature	oic.r.temperature
		Print Queue	oic.r.printer.queue
Active Speaker	oic.d.speaker	Binary Switch	oic.r.switch.binary
		Audio Controls	oic.r.audio
Air Conditioner	oic.d.airconditioner	Binary Switch	oic.r.switch.binary
		Temperature	oic.r.temperature
Air Purifier	oic.d.airpurifier	Binary Switch	oic.r.switch.binary
Air Quality Monitor	oic.d.airqualitymonitor	Air Quality Collection	oic.r.airqualitycollection
Battery	oic.d.battery	Battery	oic.r.battery

Blind	oic.d.blind	Open Level	oic.r.openlevel
Camera	oic.d.camera	Media	oic.r.media
Clothes Washer Dryer	oic.d.washerdryer	Binary Switch	oic.r.switch.binary
		Operational State	oic.r.operational.state
Coffee Machine	oic.d.coffeemachine	Binary Switch	oic.r.switch.binary
		Operational State	oic.r.operational.state
Cooker Hood	oic.d.cookerhood	Airflow Control	oic.r.airflowcontrol
		Binary Switch	oic.r.switch.binary
		Mode	oic.r.mode
Cooktop	oic.d.cooktop	Heating Zone Collection	oic.r.heatingzonecollection
Dehumidifier	oic.d.dehumidifier	Binary Switch	oic.r.switch.binary
		Humidity	oic.r.humidity
Dishwasher	oic.d.dishwasher	Binary Switch	oic.r.switch.binary
		Mode	oic.r.mode
Door	oic.d.door	Open Level	oic.r.openlevel
Dryer (Laundry)	oic.d.dryer	Binary switch	oic.r.switch.binary
		Mode	oic.r.mode
Electric Vehicle Charger	oic.d.electricvehiclecharger	Binary Switch	oic.r.switch.binary
		Operational State	oic.r.operational.state
		Battery	oic.r.battery

		Vehicle Connector	oic.r.vehicleconnector
Electric Meter	oic.d.electrictmeter	Energy Consumption	oic.r.energy.consumption
Energy Generator	oic.d.energygenerator	Energy Generation	oic.r.energy.generation
Fan	oic.d.fan	Binary Switch	oic.r.switch.binary
Food Probe	oic.d.foodprobe	Temperature (Sensor)	oic.r.temperature
Freezer	oic.d.freezer	Temperature(2)(1 Sensor and 1 Actuator)	oic.r.temperature
Garage Door	oic.d.garagedoor	Door	oic.r.door
Generic Sensor	oic.d.sensor	Any Resource Type that supports and exposes in "/oic/res" the oic.if.s interface.	oic.r. <x> Where this equates to any Resource Type that supports the oic.if.s Interface.
Grinder	oic.d.grinder	Operational State	oic.r.operational.state
		Grinder Settings	oic.r.grinder
Humidifier	oic.d.humidifier	Binary Switch	oic.r.switch.binary
Kettle	oic.d.kettle	Binary Switch	oic.r.switch.binary
Light	oic.d.light	Binary Switch	oic.r.switch.binary
Oven	oic.d.oven	Binary Switch	oic.r.switch.binary
		Temperature (2) (1 Sensor and 1 Actuator)	oic.r.temperature
Printer	oic.d.printer	Binary Switch	oic.r.switch.binary
		Operational State	oic.r.operational.state

Printer Multi-Function	oic.d.multifunctionprinter	Binary switch	oic.r.switch.binary
		Operational State (2) ¹	oic.r.operational.state
		Automatic Document Feeder	oic.r.automaticdocumentfeeder ²
Receiver	oic.d.receiver	Binary Switch	oic.r.switch.binary
		Audio Controls	oic.r.audio
		Media Source List (2)	oic.r.media.input, oic.r.media.output
Refrigerator	oic.d.refrigerator	Temperature (2) (1 Sensor and 1 Actuator)	oic.r.temperature
Robot Cleaner	oic.d.robotcleaner	Binary Switch	oic.r.switch.binary
		Mode	oic.r.mode
Scanner	oic.d.scanner	Binary Switch	oic.r.switch.binary
		Operational State	oic.r.operational.state
		Automatic Document Feeder	oic.r.automaticdocumentfeeder
Security Panel	oic.d.securitypanel	Mode	oic.r.mode
Set Top Box	oic.d.stb	Binary Switch	oic.r.switch.binary
Smart Lock	oic.d.smartlock	Lock Status	oic.r.lock.status
Smart Plug	oic.d.smartplug	Binary Switch	oic.r.switch.binary
	oic.d.steamcloset	Binary Switch	oic.r.switch.binary

¹ A Multi-Function Printer shall expose two instances of an Operational State resource; each in discrete Collections, one for the Printer specific operational state information and one for the Scanner specific operational state information. The friendly name for the Collections should indicate the device modality (printer or scanner).

² A Multi-Function Printer shall only expose an Automatic Document Feeder resource if the device has the Automatic Document Feeder capability.

Steam Closet		Mode	oic.r.mode
		Operational State	oic.r.operational.state
Switch	oic.d.switch	Binary Switch	oic.r.switch.binary
Television	oic.d.tv	Binary Switch	oic.r.switch.binary
		Audio Controls	oic.r.audio
		Media Source List	oic.r.media.input
Thermostat	oic.d.thermostat	Temperature (2) (1 Sensor and 1 Actuator)	oic.r.temperature
Washer (Laundry)	oic.d.washer	Binary Switch	oic.r.switch.binary
		Operational State	oic.r.operational.state
Water Heater	oic.d.waterheater	Binary Switch	oic.r.switch.binary
		Temperature(2) (1 Sensor and 1 Actuator)	oic.r.temperature
Water Valve	oic.d.watervalve	Open Level	oic.r.openlevel
Window	oic.d.window	Open Level	oic.r.openlevel

418 **B.2 Standardized enumeration values**

419 Resource Types may have a list of supported enumeration values. The supported enumeration
420 values may differ when applied in different devices. In this section the affected Resource Types
421 are described by:

- 422 • Generic list of supported values
- 423 • Mandated list of supported values when applied to a specific Device

424 **B.2.1 Alphabetical list of standardized enumeration types**

425 This section lists the standardized enumeration types that are used in the oic.r.mode,
426 oic.r.operational.state, and oic.r.consumable Resources.

- 427 • aborted
 - 428 ○ An internal device, communication or security error

- 429 • active
 - 430 ○ Unit is active
- 431 • airDry
 - 432 ○ unit is air drying
- 433 • armedAway
 - 434 ○ unit is armed for away
- 435 • armedInstant
 - 436 ○ unit is armed instantly
- 437 • armedMaximum
 - 438 ○ unit is armed at maximum level
- 439 • armedNightStay
 - 440 ○ unit is armed in night stay
- 441 • armedStay
 - 442 ○ unit is armed in stay mode
- 443 • boiling
 - 444 ○ unit is in boiling state or mode
- 445 • brewing
 - 446 ○ unit is in brewing state or mode
- 447 • cancelled
 - 448 ○ the job was cancelled either by the remote client or by the user
- 449 • completed
 - 450 ○ job finished successfully
- 451 • down
 - 452 ○ unit is unavailable
- 453 • dry
 - 454 ○ unit is dry mode
- 455 • disabled
 - 456 ○ unit's current operational mode is disabled
- 457 • enabled
 - 458 ○ unit's current operational mode is enabled

- 459 • filterMaterial
 - 460 ○ filter material that is used by a device
- 461 • grinding
 - 462 ○ unit is in grinding state or mode
- 463 • idle
 - 464 ○ new jobs can start processing without waiting
- 465 • ink
 - 466 ○ generic ink cartridge for a device
- 467 • inkBlack
 - 468 ○ black ink cartridge for a device
- 469 • inkCyan
 - 470 ○ cyan ink cartridge for a device
- 471 • inkMagenta
 - 472 ○ magenta ink cartridge for a device
- 473 • inkTricolour
 - 474 ○ tricolour ink cartridge for a device
- 475 • inkYellow
 - 476 ○ yellow ink cartridge for a device
- 477 • keepwarm
 - 478 ○ unit is in keep warm state or mode
- 479 • notsupported
 - 480 ○ ability to set a specific operational mode by a client is not supported
- 481 • pause
 - 482 ○ unit is paused (by user)
- 483 • pending
 - 484 ○ job initiated, engine is preparing
- 485 • pendingHeld
 - 486 ○ job is not a candidate for processing for any number of reasons, will return to
 - 487 ○ pending state if reasons are solved.
- 488 • preWash

- 489 ○ unit is pre wash mode
- 490 • processing
 - 491 ○ processing the job
- 492 • rinse
 - 493 ○ unit is rinse mode
- 494 • stopped
 - 495 ○ error condition occurred
- 496 • spin
 - 497 ○ unit is in spin mode
- 498 • testing
 - 499 ○ calibrating, preparing the unit
- 500 • toner
 - 501 ○ generic toner cartridge for a device
- 502 • tonerBlack
 - 503 ○ black toner cartridge for a device
- 504 • tonerCyan
 - 505 ○ cyan toner cartridge for a device
- 506 • tonerMagenta
 - 507 ○ magenta toner cartridge for a device
- 508 • tonerYellow
 - 509 ○ yellow toner cartridge for a device
- 510 • wash
 - 511 ○ unit is in wash mode
- 512 • wrinklePrevent
 - 513 ○ unit is in winkle prevent mode

514 **B.2.2 Standardized list of supported values for Mode Resource Type (oic.r.mode)**

515 The following enumeration values apply to both the supportedModes and modes Properties within
516 the Mode Resource Type.

517

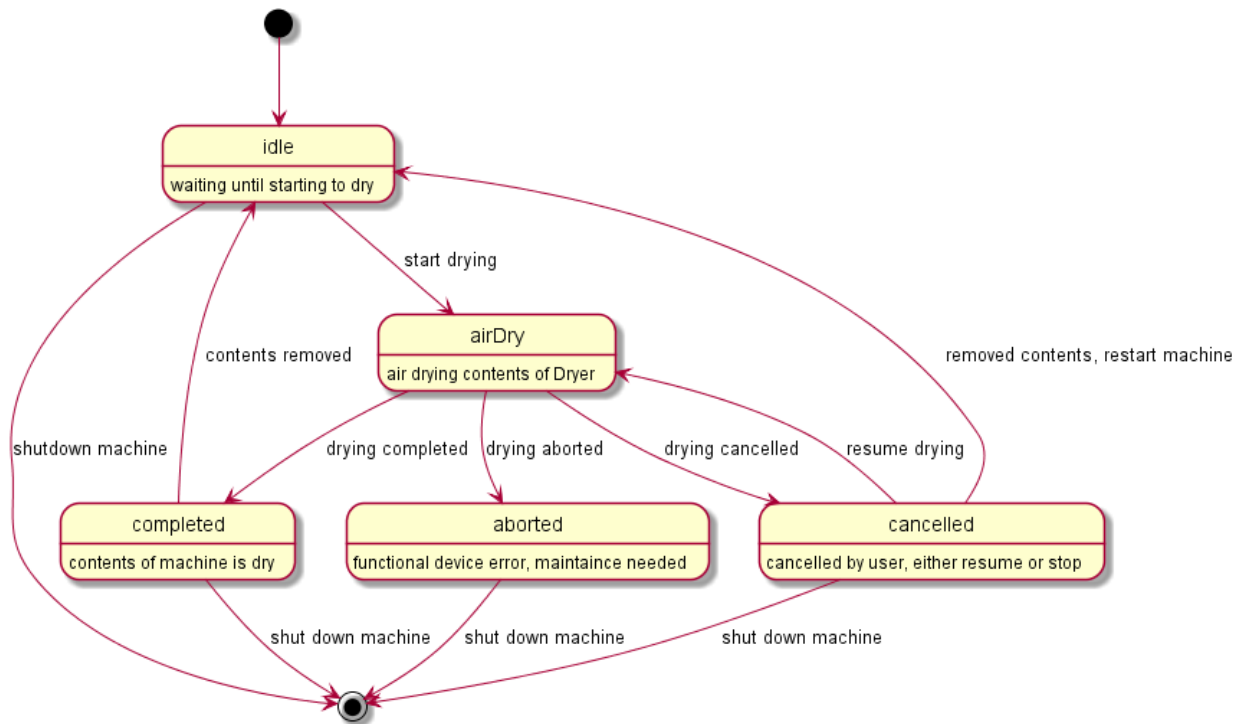
Table 6 list of required oic.r.mode supported values per Device Type (“rt”)

Device Name (informative)	Device Type (rt) (Normative)	Required enumeration value
Security Panel	oic.d.securityPanel	active
		armedAway
		armedInstant
		armedMaximum
		armedNightStay
		armedStay

518

519 The modes can be viewed upon as mode changes of the device. However this specification does
 520 not impose any relationship between the different modes of a Device. Hence all mode changes are
 521 expected to occur from a Client point of view.

An example mode transition diagram of an Dryer, not all mode transitions are listed.



522

523

Figure 4 Example of mode transitions of a Dryer.

524 **B.2.3 Standardized list of supported values for Operational State Resource Type**
 525 **(oic.r.operational.state)**

526 The following enumeration values apply to the jobStates and machineStates Properties within the
 527 operational state Resource Type.

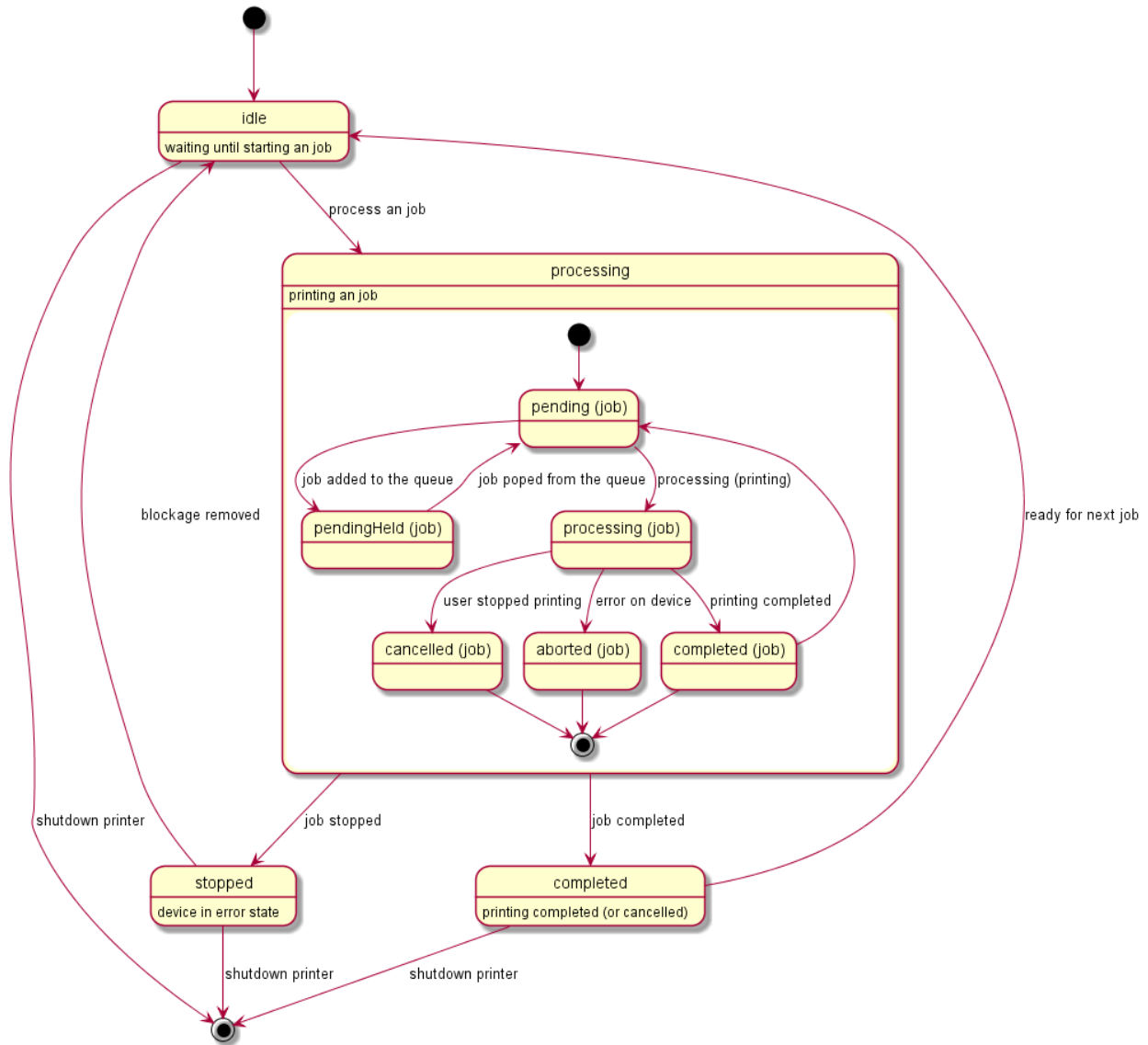
528 **Table 7 list of required oic.r.operational.state supported values per Device Type (“rt”)**

Device Name (informative)	Device Type (rt) (Normative)	Required enumeration value machineStates	Required enumeration value jobStates
Printer	oic.d.printer	idle	pending
		processing	pendingHeld
		stopped	processing
			cancelled
			aborted
			completed
Printer Multi- Function	oic.d.multifunctionPrinter	See printer	See printer
		See scanner	See scanner
scanner	oic.d.scanner	idle	cancelled
		processing	aborted
		testing	completed
		stopped	pending
		down	processing

529 The operational state can be viewed as state changes of the device that includes separate handling
 530 of jobs within the overall machine state. However this specification does not impose any
 531 relationship between the different machine or job states of a device. Hence all machine states and
 532 or jobstate changes are expected to occur from a Client point of view.

533

An example machine and job states of a Printer, not all state transitions are listed.



534
535

Figure 5 Example of mode transitions of a Printer.

536 **B.2.4 Standardized list of supported values for Consumable and Consumable Collection**
537 **Resource Types (oic.r.consumable, oic.r.consumablecollection)**

538 The following enumeration values may be populated in both the supportedconsumables (in
539 oic.r.consumablecollection) and typeofconsumable (in oic.r.consumable) Properties within the
540 Consumable and Consumable Collection Resource Types. The typeofconsumable Property shall
541 only be populated with a value exposed within the supportedconsumables Property in a specific
542 instance of the Consumable Collection Resource Type.

543 This constitutes the known set of possible values for these Properties in the Consumable and
544 Consumable Collection Resources. A vendor may extend this set by providing vendor defined
545 enumerations following the convention defined in the OCF Resource Type Specification.

546
547

Table 8 list of defined enumeration values for oic.r.consumable, oic.r.consumablecollection

Friendly Name (informative)	Enumeration Value (Normative)	Description (Informative)
Toner Cartridge	toner	Generic toner cartridge.
Black Toner Cartridge	tonerBlack	Black toner cartridge
Cyan Toner Cartridge	tonerCyan	Cyan toner cartridge
Magenta Toner Cartridge	tonerMagenta	Magenta toner cartridge
Yellow Toner Cartridge	tonerYellow	Yellow toner cartridge
Filter Material	filterMaterial	Any replaceable or reusable filter material; such as water filters, air filters, dust filters etc.
Ink Cartridge	ink	Generic ink cartridge
Black Ink Cartridge	inkBlack	Black ink cartridge
Cyan Ink Cartridge	inkCyan	Cyan ink cartridge
Magenta Ink Cartridge	inkMagenta	Magenta ink cartridge
Yellow Ink Cartridge	inkYellow	Yellow ink cartridge
Tricolour Ink Cartridge	inkTricolour	Tri-colour ink cartridge; typically Cyan plus Magenta plus Yellow.

548

549 **B.3 Camera Media Format (oic.r.media)**

550 The supported camera media formats can be discovered by looking at the SDP (see IETF RFC
551 4566) list of the media Resource Type. The recommended list of supported media formats are
552 listed in Table 9.

553

Table 9 Recommended media profiles.

Mediatype	codec	Content container format	transport	Additional information
Audio	AAC		RTP	
Video	H.264		RTP	Recommended minimal resolution 1920x1080 (width, height)
Video	H.264/AAC	MPEG-2 TS	RTP	Recommended minimal resolution 1920x1080 (width, height)
Still image	JPEG	JPEG	RTP	Recommended minimal resolution 1920x1080 (width, height)

554

555 **B.4 Additional Requirements per Device Type**

556 This section is intentionally left blank

Annex C Healthcare Device Types

557

558 C.1 Scope

559 This Annex defines Device Types for use in the healthcare and fitness vertical, and describes
560 general use cases to which OCF Healthcare Devices apply, along with common functional
561 requirements.

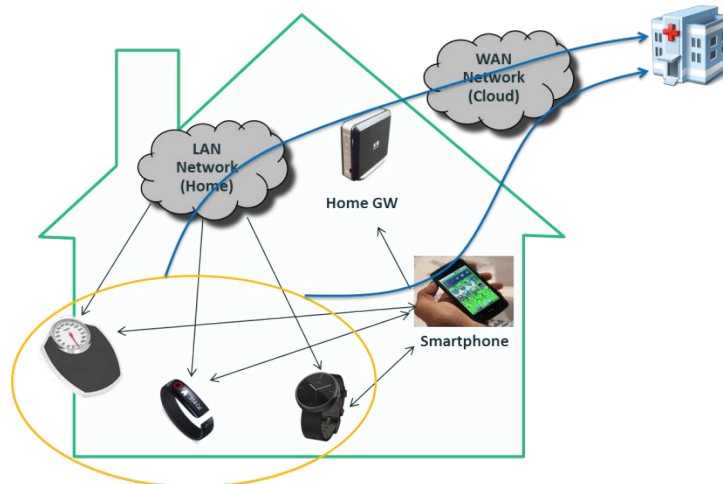
562 Although some common requirements are defined in this document, implementation is responsible
563 for checking appropriate security, safety, environmental, and health practices, and applicable
564 regulatory requirements from national health authorities.

565 C.2 Introduction to OCF healthcare devices

566 This Annex references and inherits data models defined in the OCF Resource Type Specification,
567 to define OCF Healthcare Device Types in Section C. 4.

568 C.3 Operational scenarios

569 Personal fitness and/or medical data are read by a monitoring Device (OCF Client role) from
570 Healthcare Devices (OCF Server role), and the monitoring Device triggers appropriate actions
571 based on the data collected. Many of the target usages are for personal health or fitness, although
572 clinical use cases can be realized with similar modelling.



573

574 **Figure 6 Schematic diagram of healthcare usages**

575 As shown in the schematic diagram, data from various fitness and healthcare devices can be
576 gathered on a smart phone for monitoring and can be transmitted to the healthcare services
577 through a gateway or through the smartphone. The protocol to be used for transmission is defined
578 in the OCF Core Specification. Collected personal fitness and/or medical data are used for
579 condition monitoring or medical research, receiving advice from a trainer/doctor, or triggering an
580 emergency notification.

581 C.4 Standardized Device Types

582 OCF Healthcare Device Types specify Devices in the healthcare and fitness domains of the OCF
583 ecosystem. The Device Type exposed by the "rt" value of /oic/d of all Healthcare Devices shall
584 have a Resource Type value ("rt") prefixed with "oic.d." The Healthcare Device Types are listed in
585 Table 10 Alphabetical list of Healthcare Device Types.

Table 10 Alphabetical list of Healthcare Device Types

Section	Device Name	Device Type (rt)
C.3.1	Blood Pressure Monitor	oic.d.bloodpressuremonitor
C.3.2	Glucose Meter	oic.d.glucosemeter
C.3.3	Body Scale	oic.d.bodyscale
C.3.4	Body Thermometer	oic.d.bodythermometer

587 The remainder of this Annex defines Resource Types for each Device Type, but for full definitions
588 of Resource Types, see OCF Resource Type Specification.

589 Each Device Type defines a minimal set of Resource Types that are implemented by that Device
590 Type as required Resource Types. A Healthcare Device may expose additional OCF-defined
591 optional Resource Types. It should be noted that all Resource Types are commonly available for
592 all Device Types, but if a Device Type aims to implement optional Resource Types related to
593 healthcare, it shall expose such Resource Types using the definitions provided in this annex.

594 When a Resource Type is listed as Mandatory (M) in this Annex, the Device shall:

- 595 - expose that Atomic Measurement Resource Type in /oic/res
- 596 - expose that Resource Type as a Link in the Atomic Measurement

597 The mandatory Resource Types for an Atomic Measurement shall be listed in the "rts-m" Property
598 Value.

599 When a Resource Type is listed as Optional (O) in this Annex, the Device uses that Resource Type
600 as a Link in the Atomic Measurement if the Device makes that feature available via OCF. For
601 example, if a blood pressure monitor (i.e. oic.d.bloodpressuremonitor) measures pulse rate and
602 chooses to expose that feature over OCF, it exposes the oic.r.pulserate Resource Type as a Link
603 in the blood pressure monitor Atomic Measurement (oic.r. bloodpressuremonitor-am). The allowed
604 Resource Types for an instance of an Atomic Measurement (which includes both the M and O
605 Resource Types that are implemented) shall be listed in the "rts" Property Value.

606 Some Resource Types are commonly used for all Healthcare Device Types. Users may want to
607 associate timestamps to the measurements when they access their healthcare information (in
608 RFC3339 date and time format, oic.r.time.stamp). A Healthcare Device may be used by different
609 users, so identifying a specific user with an ID may be appropriate (oic.r.userid). These Resource
610 Types are exposed as Conditionally Required Resource Types of an Atomic Measurement (as
611 defined per Section 7.8.4 of OCF Core Specification) of a specific Healthcare Device. The "rt"
612 value of Resource Types that use Atomic Measurements are suffixed by -am (Atomic
613 Measurements). When present in an Atomic Measurement, oic.r.time.stamp and oic.r.userid
614 indicate the time when a sample of data is measured by a certain user.

615 **Table 11 Commonly used Resource Types of Healthcare Device Types**

Resource Type Name	Resource Type Value	Requirement (M, S, O, CA, CR)
Observed Time	oic.r.time.stamp	O
User ID	oic.r.userid	O

616 It should also be noted that Resource-level and Property-level requirements can be different. All
617 OCF Resource Types are specified in JSON schema format and the Properties which are defined
618 in a specific schema can either be mandatory or optional. In other words, even if a Resource Type
619 is mandatory for a Device Type, some of its Properties may not be mandatory.

620 **C.4.1 Blood Pressure Monitor**

621 A blood pressure monitor measures blood pressure [i.e., systolic, diastolic, and mean arterial
 622 pressure (MAP)]. Blood pressure is most frequently measured using the units of millimetres of
 623 mercury (mmHg). Blood pressure is often denoted as 120/80 mmHg, which means systolic blood
 624 pressure of 120 and diastolic blood pressure of 80.

625 **Table 12 Healthcare Device Type of blood pressure monitor**

Device Type (rt)	Resource Type Name	Resource Type Value	Requirement level
oic.d.bloodpressuremonitor	Blood pressure monitor Atomic Measurement	oic.r.bloodpressuremonitor-am	M

626 **Table 13 Atomic Measurement of blood pressure monitor**

Atomic Measurement Resource Type Value	Resource Type Name	Resource Type Value	Requirement level
oic.r.bloodpressuremonitor-am	Blood pressure	oic.r.blood.pressure	M
	Pulse rate	oic.r.pulserate	O

627

628 **C.4.1.1 Required Resource Types**

629 A blood pressure monitor shall expose oic.r.blood.pressure to report the blood pressure (systolic
 630 and diastolic) and optionally MAP.

631 **C.4.1.2 OCF-defined Optional Resource Types**

632 A blood pressure monitor measures pulse rate using the oic.r.pulserate Resource Type.

633 See Table 11 Commonly used Resource Types of Healthcare Device Types for additional
 634 commonly used Resource Types that could be used here.

635 **C.4.2 Glucose Meter**

636 A glucose meter measures the concentration of glucose in the blood. Glucose, or blood sugar, is
 637 the human body's primary source of energy. The blood glucose level is a key parameter that
 638 diabetics measure multiple times per day.

639 **Table 14 Healthcare Device Type of glucose meter**

Device Type (rt)	Resource Type Name	Resource Type Value	Requirement level
oic.d.glucosemeter	Glucose meter Atomic Measurement	oic.r.glucosemeter-am	M

640 **Table 15 Atomic Measurement of glucose meter**

Atomic Measurement Resource Type Value	Resource Type Name	Resource Type Value	Requirement level
--	--------------------	---------------------	-------------------

oic.r.glucosemeter-am	Glucose	oic.r.glucose	M
	Context Carbohydrates	oic.r.glucose.carb	O
	Context Exercise	oic.r.glucose.exercise	O
	Hemoglobin Bound to Glucose A1c Form (HbA1c)	oic.r.glucose.hba1c	O
	Context Health	oic.r.glucose.health	O
	Context Meal	oic.r.glucose.meal	O
	Context Medication	oic.r.glucose.medication	O
	Context Sample Location	oic.r.glucose.samplelocation	O
	Context Tester	oic.r.glucose.testers	O

641 **C.4.2.1 Required Resource Types**

642 A glucose meter shall expose oic.r.glucose to report the blood glucose level in mg/dL or mmol/L.

643 **C.4.2.2 OCF-defined Optional Resource Types**

644 A glucose meter measures context carbohydrates, then it shall expose the context carbohydrates
645 using oic.r.glucose.carb Resource Type.

646 A glucose meter measures context exercise using the oic.r.glucose.exercise Resource Type.

647 A glucose meter measures Hemoglobin Bound to Glucose A1c Form (HbA1c) using the
648 oic.r.glucose.hba1c Resource Type.

649 A glucose meter measures context health using the oic.r.glucose.health Resource Type.

650 A glucose meter measures context meal using the oic.r.glucose.meal Resource Type.

651 A glucose meter measures context medication using the oic.r.glucose.medication Resource
652 Type.

653 A glucose meter measures context sample location using the oic.r.glucose.samplelocation
654 Resource Type.

655 A glucose meter measures context tester using the oic.r.glucose.testers Resource Type.

656 See Table 11 Commonly used Resource Types of Healthcare Device Types for additional
657 commonly used Resource Types that could be used here.

658 **C.4.3 Body Scale**

659 A body scale measures the weight. The weight is most frequently measured using the units of
660 kilograms (kg) or pounds (lb).

661 **Table 16 Healthcare Device Type of body scale**

Device Type (rt)	Resource Type Name	Resource Type Value	Require ment level
oic.d.bodyscale	Body scale Atomic Measurement	oic.r.bodyscale-am	M

Table 17 Atomic Measurement type of body scale

Atomic Measurement Resource Type Value	Resource Type Name	Resource Type Value	Requirement level
oic.r.bodyscale-am	Weight	oic.r.weight	M
	Body Mass Index (BMI)	oic.r.bmi	O
	Height	oic.r.height	O
	Body Fat	oic.r.body.fat	O
	Body Water	oic.r.body.water	O
	Body Soft Lean Mass	oic.r.body.slm	O
	Body Fat Free Mass	oic.r.body.ffm	O

663 **C.4.3.1 Required Resource Types**

664 A body scale shall expose oic.r.weight to report the body weight of a person.

665 **C.4.3.2 OCF-defined Optional Resource Types**

666 A body scale measures height using the oic.r.height Resource Type. Especially, a body scale
667 measures the height if BMI is also reported because the height is used when a body scale
668 measures BMI.

669 A body scale measures Body Mass Index (BMI) using the oic.r.bmi Resource Type.

670 A body scale measures body fat using the oic.r.body.fat Resource Type.

671 A body scale measures body water using the oic.r.body.water Resource Type.

672 A body scale measures body soft lean mass using the oic.r.body.slm Resource Type.

673 A body scale measures body fat free mass using the oic.r.body.ffm Resource Type.

674 See Table 11 Commonly used Resource Types of Healthcare Device Types for additional
675 commonly used Resource Types that could be used here.

676 **C.4.4 Body Thermometer**

677 A body thermometer measures the temperature at some point. In general, the body thermometer
678 is placed at the measurement site for sufficient time for the measuring probe to reach the same
679 temperature as the body site, and when stable, a direct digital reading of the probe temperature is
680 taken.

Table 18 Healthcare Device Type of body thermometer

Device Type (rt)	Resource Type Name	Resource Type Value	Requirement level
oic.d.bodythermometer	Body thermometer Atomic Measurement	oic.r.bodythermometer-am	M

Table 19 Atomic Measurement type of body thermometer

Atomic Measurement Resource Type Value	Resource Type Name	Resource Type Value	Requirement level
oic.r.bodythermometer-am	Temperature	oic.r.temperature	M
	Body Location for temperature	oic.r.body.location.temperature	O

683 **C.4.4.1 Required Resource Types**

684 A body thermometer shall expose oic.r.body.temperature to report the temperature level and the
685 unit of a measured temperature is reported either in C, F or K.

686 **C.4.4.2 OCF-defined Optional Resource Types**

687 A body thermometer measures temperature site using the oic.r.body.location.temperature
688 Resource Type.

689 See Table 11 Commonly used Resource Types of Healthcare Device Types for additional
690 commonly used Resource Types that could be used here.

691

Annex D Industrial Device Types

692 D.1 Operational Scenarios

693 The Optical RFID Tag and Optical RFID Station Resource Types describe the attributes associated
694 with an optical augmented RFID system of a smart factory environment for integrating the
695 observation and the actuation in production lines of plants.

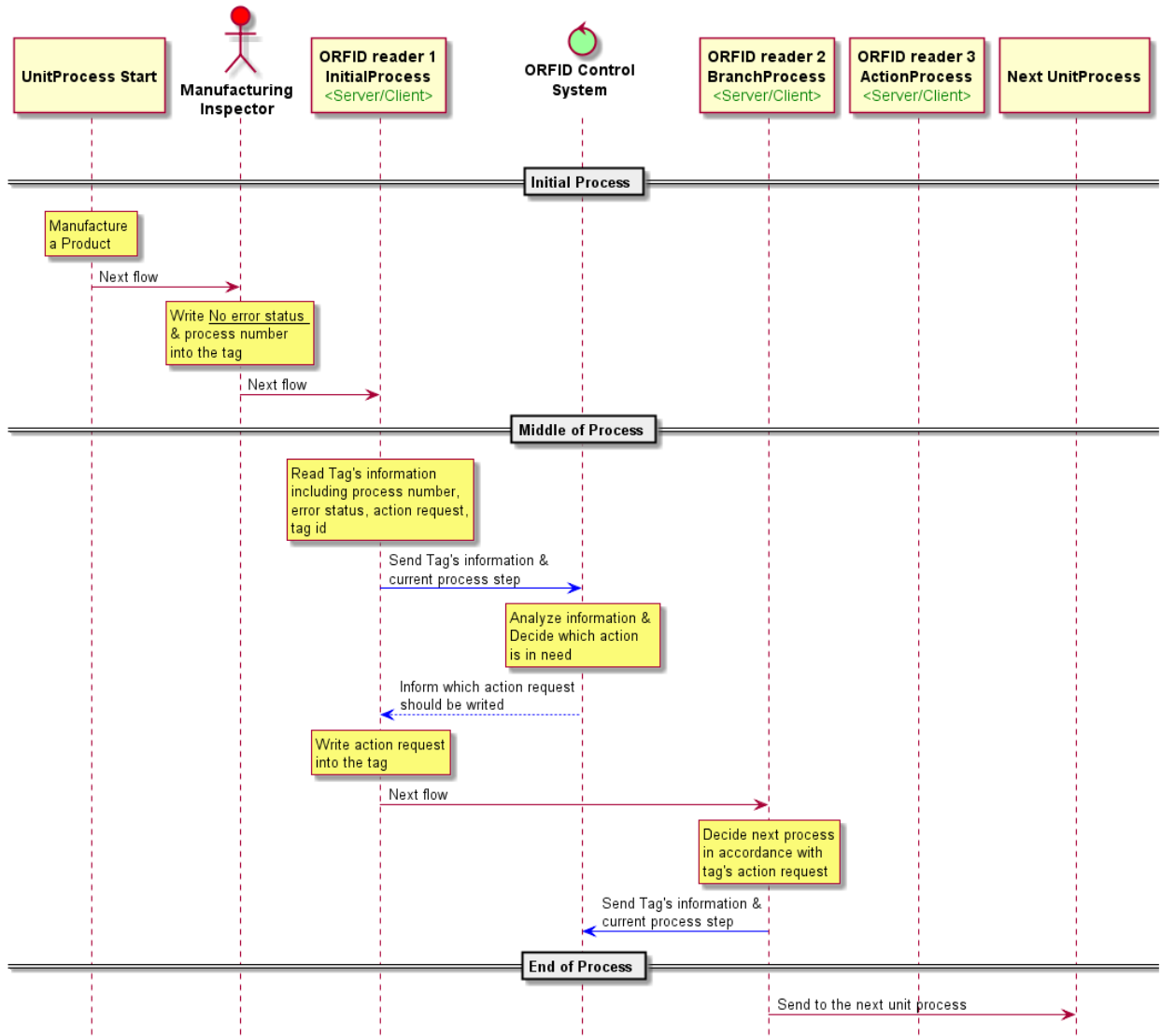
696 Commercial observation is the real-time monitoring to collect broad series of data from each
697 product on the production line and machineries from the plant floor. This collected big data can be
698 sent to OCF cloud and/or manufacturer's internal OCF network where it is analysed and used to
699 estimate overall production flow, productivity and identify failure parts.

700 Commercial actuation is the real-time interaction to take actions on system failures such as
701 defected product's isolation, possibly sending the product into a repair line, alarming, such as
702 production line status, display panels and hazard issues such as fire and flood of the Commercial
703 environment by sending actuation requests to actuators directly and/or to client(s).

704 Optical augmented RFID reader and tag assist in production line control utilizing the OCF
705 ecosystem for smart factory environment. The optical augmented RFID reader is represented by
706 the RFID Station Resource Type, the tag by the RFID Tag Resource Type.

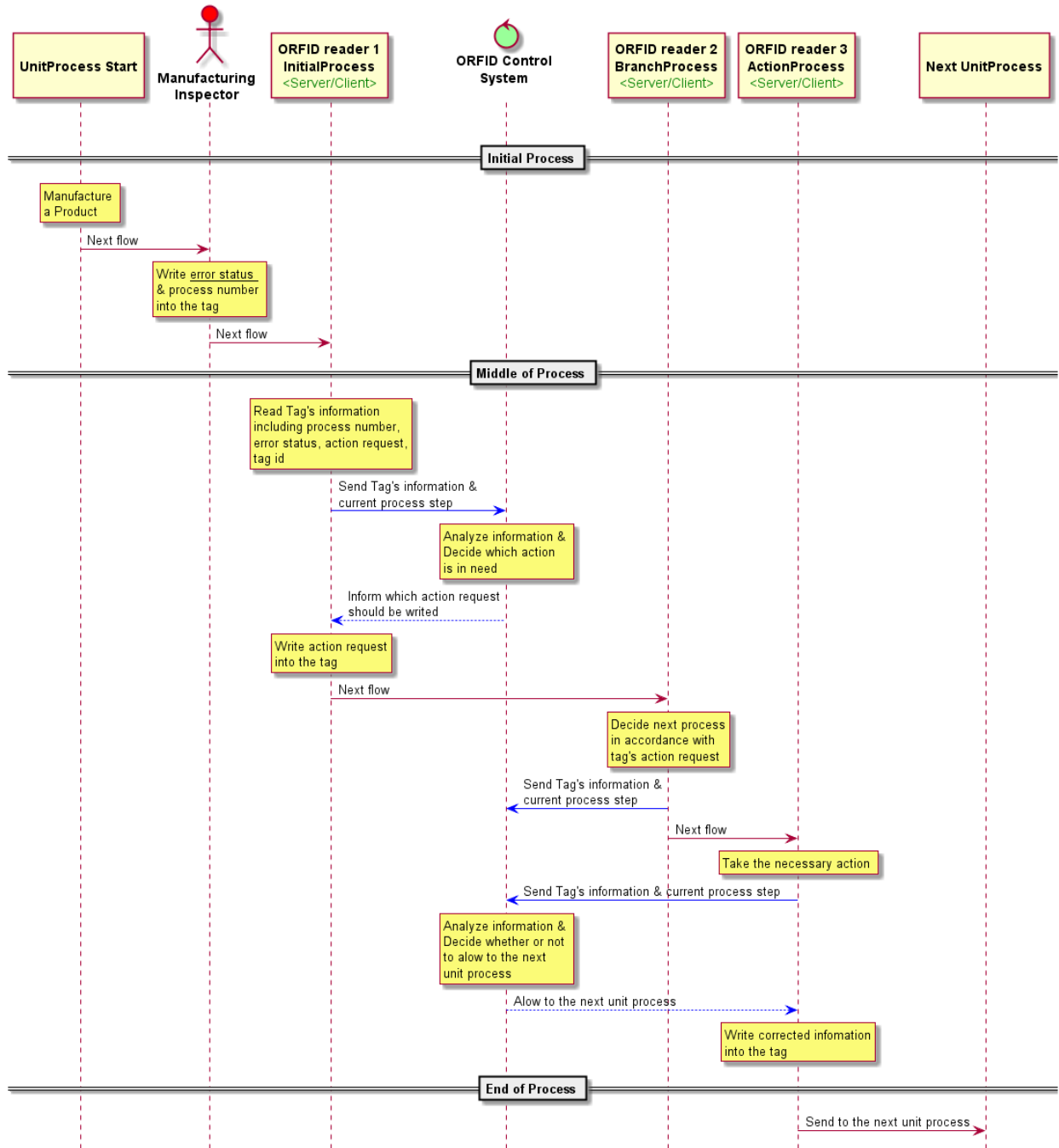
707 In the RFID Tag Resource Type the tagid is an integer showing the currently read optical
708 augmented RFID tag's identity information.

709 In the RFID Station Resource Type the process represents the stage of the product in the product
710 line which has an optical RFID tag on its body. Event is represented by a Boolean value set to
711 "True" or "False" alarming the issue when additional action is requested for the tagged product.
712 actionrequest represents necessary actions like the isolation of the product, to send the product
713 back to another specific line to modify or fix an issue.



714
715
716
717

Figure 7 Normal process scheme of optical augmented RFID in smart factory environment



718
719

720 **Figure 8 Abnormal process scheme of optical augmented RFID in smart factory**
721 **environment**

722 Figure 8 Abnormal process scheme of optical augmented RFID in smart factory environment shows
723 product error control scheme in the smart factory. Blue arrow lines are where OCF communication
724 exists. ORFID tag ID is only readable to maintain consistent identity.
725 Manufacturing Inspector writes "error status" and "process number" into the tag after
726 manufacturing a product. ORFID reader1 reads Tag's information and sends the information
727 including current process step to ORFID Control System. Then ORFID

728 Control System replies. When ORFID reader1 receives "action request" from ORFID Control
 729 System. ORFID reader1 writes "action request" into the tag.
 730 ORFID reader2 located at the BranchProcess line decides next flow in accordance with tag's
 731 "action request" information then it sends Tag's information and current process step to ORFID
 732 Control System, and sends the product to the right flow.
 733 If the product has an error, the product gets necessary action at ActionProcess line. Then ORFID
 734 reader3 sends repaired product's information. Then ORFID reader3 waits until ORFID Control
 735 System replies. When ORFID reader3 receives instruction from ORFID Control System for the next
 736 flow, ORFID reader3 sends the product according to instruction.

737 **D.2 Industrial Required Resources per Device Type**

738 Device Types may mandate that specific Resources be implemented. The required Resource per
 739 Device Type where mandated by the Industrial vertical is listed in Table 5.

740 **Table 20 Alphabetical list of Device Types ("rt"), including required Resources for**
 741 **Industrial**

Device Name (informative)	Device Type ("rt") (Normative)	Required Resource name	Required Resource Type
Optical augmented RFID Reader	oic.d.orfid	Optical Tag RFID	oic.r.orfid.tag
		Optical Station RFID	oic.r.orfid.station

742