



**OPEN** CONNECTIVITY  
FOUNDATION™

# OCF CERTIFICATION UPDATE

David Tung

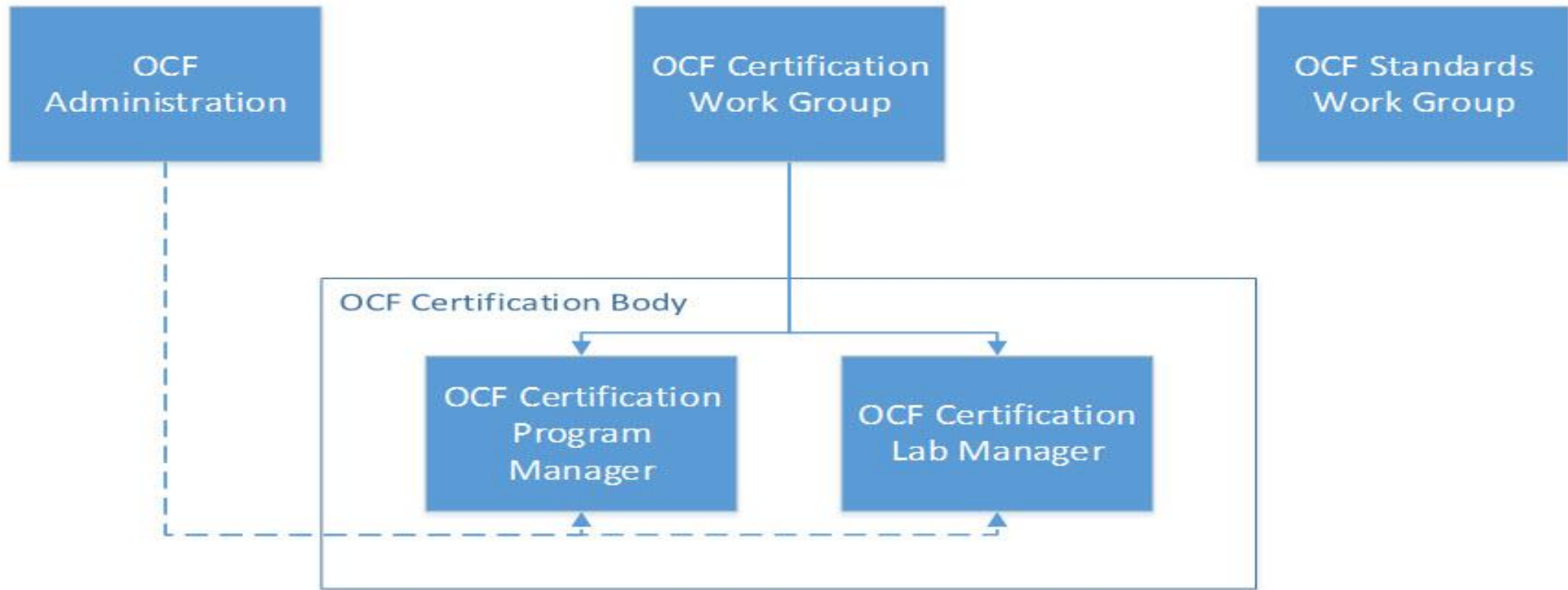
Allion Labs May 2016



# Overview

- OCF Certification Introduction
- OCF Authorized Test Labs
- Submission Type and Process
- Events and Roadmap
- FAQ

# Certification Organization Introduction



4

# Certification Organization Introduction (Cont.)



## OCF Certification Body:

- Certification Program Manager (CPM)
  - » Test Specification(s) development
  - » Manage Plugfest planning
  - » Test tool validation
  - » CSRL maintenance
  - » Review all test report submission by a 3<sup>rd</sup> party lab OCE
  - » Chair waiver review board
- Certification Lab Manager (CLM)
  - » Inspect and audit 3<sup>rd</sup> party lab
  - » Manage comparison testing among all OCF ATL
  - » Certification release update and provide training to OCE
  - » Backup of CRSL (certification requirement status list) maintenance and Plugfest planning

# Authorized Test Laboratories (ATL)



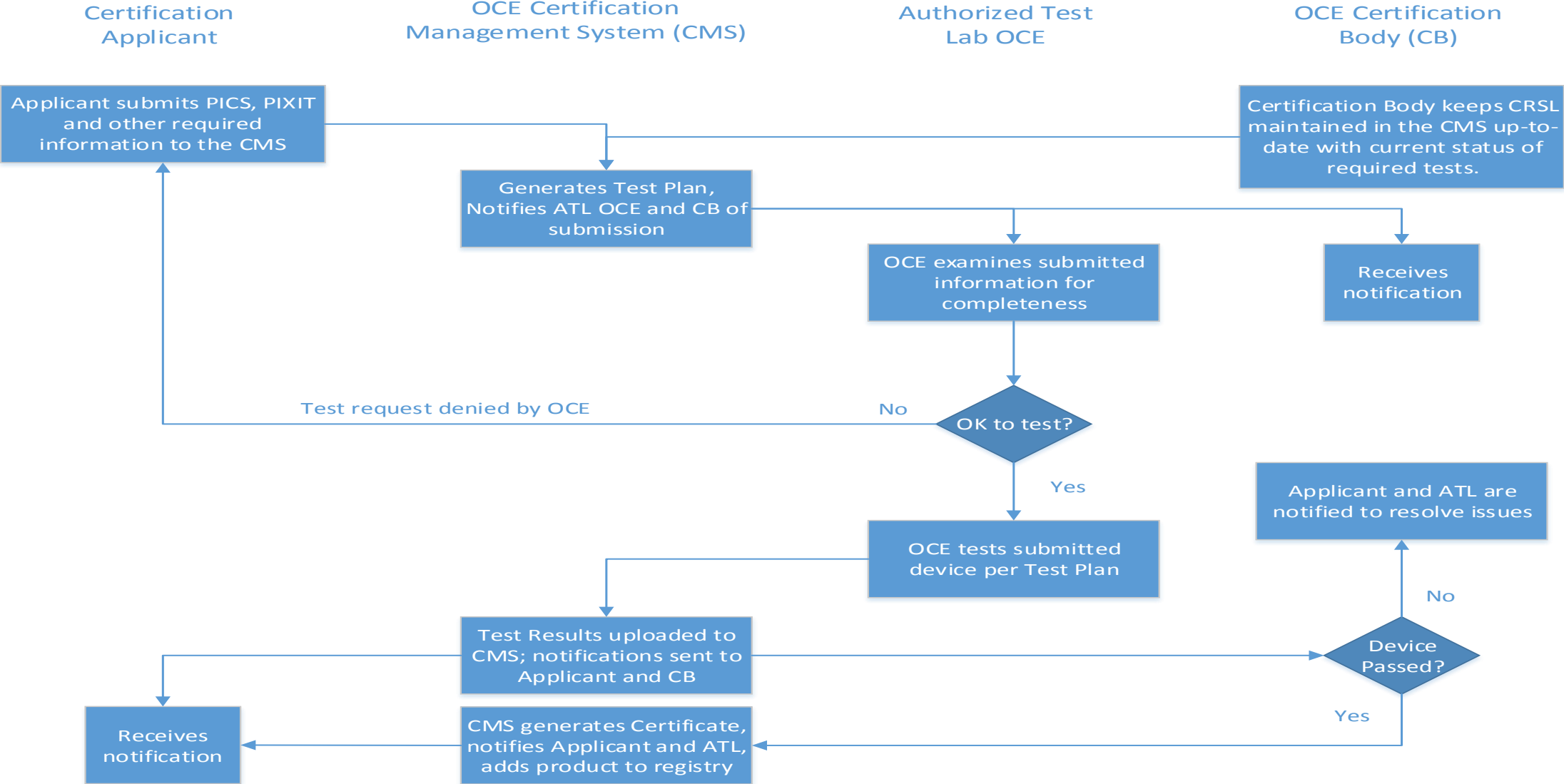
- ATL
  - Execute defined test procedures against a candidate device
  - Participate in OCF Plugfest
  - Identify an OCE
  - Send test reports to the CB and test applicant
  - Will be audit by CLM every 18-24 months
- OCF Certification Expert (OCE)
  - Serve as the formal point of contact with the CB
- CAB (Certification Appeal Board)
  - Composed by CPM, OCE and 2 Experts from SWG
  - Disputation(s) are voted by CPM and 2 SWG experts

# OCF Submission Type



- Original Model
  - Tested and Passed all mandatory test cases
  - Optional features discovered by test tool shall be validated as well
- Derived Model
  - Minor Changes : Non-functional changes such as applicant, product name, or typographical corrections. (Retest is not required)
  - Permitted Changes: Small software changes but not alter OCF functionality. (Partial test is required)
  - Determination of derived model is made by CB

# OCF Certification Process





# OCF Next Coming Events (Certification)

- Official Certification Event
  - Location : Krakow, Poland (Comarch)
  - Dates : July 11-15
- Plugfest #8
  - Location : Seoul, Korea (TTA)
  - Dates : Sept 26-30
- Plugfest #9
  - Location : Fremont, California US (UL)
  - Dates : Dec 5-9
- Plugfest #10
  - Location : Taipei, Taiwan (Allion)
  - Dates : Feb/March 2017





**OPEN** CONNECTIVITY  
FOUNDATION™