



**OPEN** CONNECTIVITY  
FOUNDATION®

## OCF Certification

Mitch Kettrick

OCF Certification Program Manager

[cpm@openconnectivity.org](mailto:cpm@openconnectivity.org)



# Certification Overview

- OCF's Certification Work Group oversees the OCF Certification Program
- Several documents are written / maintained to support this:
  - Certification Test Requirements (CTR) document (essentially the 'test spec')
  - Certification Procedure Requirements (CPR) document (the 'process' of certifying)
  - Certification Requirements Status List (CRSL) (which tests must pass to get certified)
- Certification utilizes two major OCF-maintained tools\*
  - OCF Certification Management System (OCMS) – website submission and tracking
  - Conformance Test Tool (CTT) – performs all the identified tests in the CTR

\* Access to the OCMS and CTT are restricted to OCF Member Company representatives.



# OCF Certification Management System (OCMS)

- The OCMS is a web-based application that is used to track Devices through the OCF certification process
- Once certification is complete, the information in the OCMS will be used to populate the Certified Products List on the OCF website
- Go to <https://cms.openconnectivity.org>
  1. login or create an account (OCF members only)
  2. Click “[Create OCF Product](#)”
  3. Fill out applicable / required information
  4. Click “[Add new PICS](#)”
  5. Provide information about the product
  6. Click “[Create PICS](#)”
  7. Click “[Save](#)” to create the Platform
  8. The [CTT Configuration Files](#) (PICS) are then listed at the top of the page

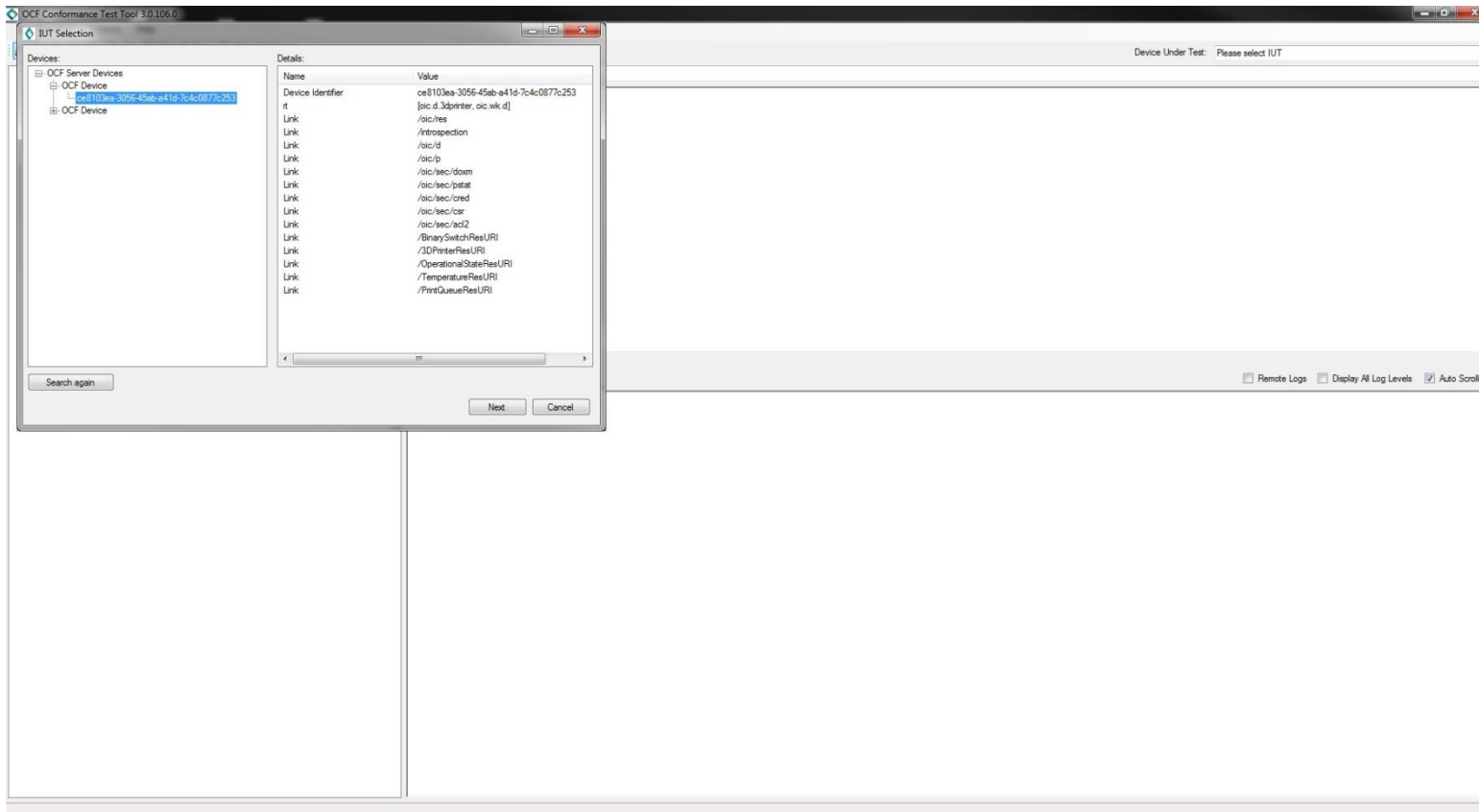


# Conformance Test Tool (CTT)

- The CTT is a Windows-based application used to validate that a Device is conformant to the OCF Specifications
- In order to properly test a Platform, the CTT requires a configuration file generated by the OCMS called the PICS
  - Indicates what features are implemented
  - Defines what role(s) the Platform is implementing
  - Provides additional testing information for features that require user interaction
  - The CTT uses this information to determine which test cases apply to the Implementation Under Test (IUT)
- For official certification, the testing must be done by an Authorized Test Lab
- The CTT is available to members for R&D and pre-certification testing

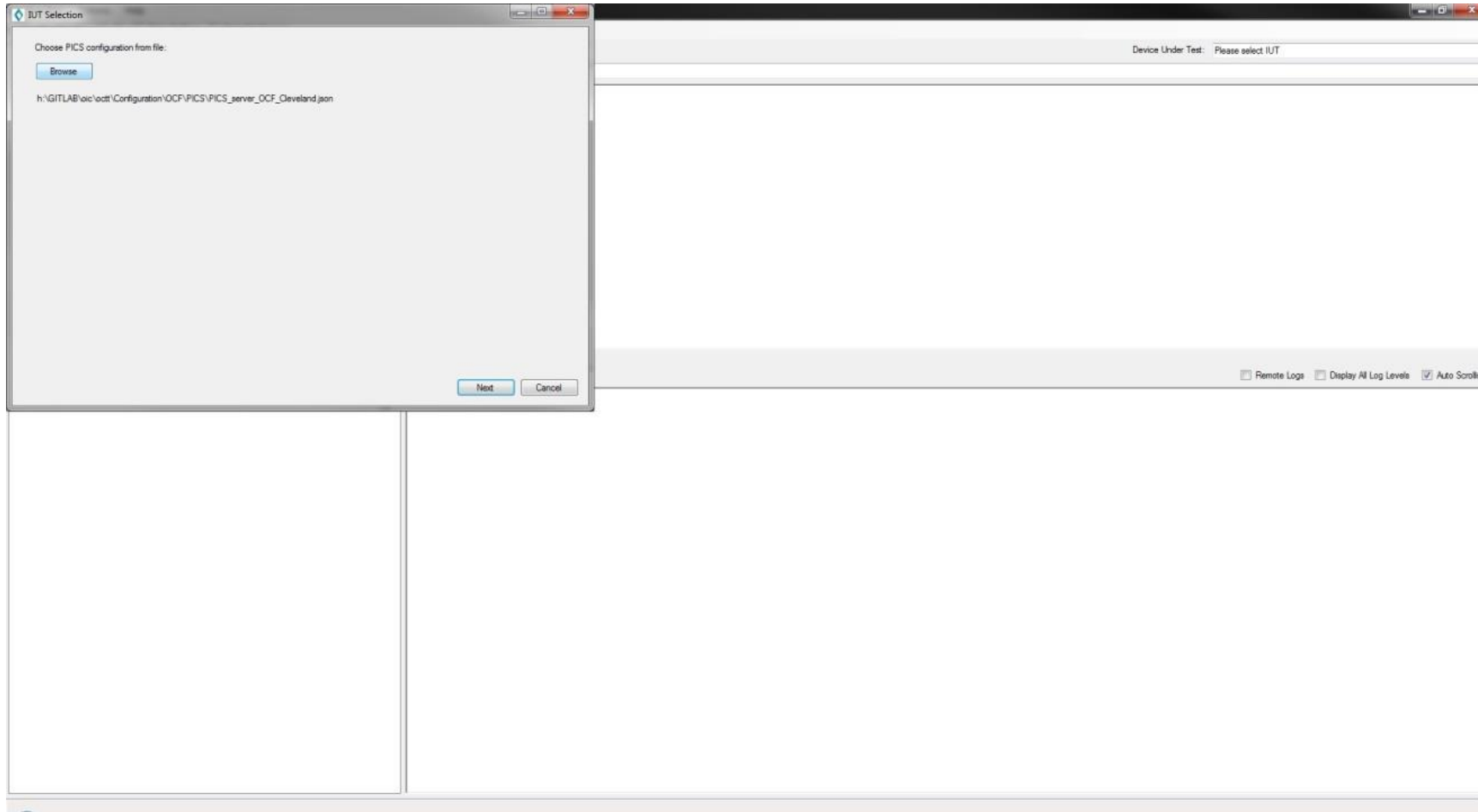


# CTT Step 1: Select the IUT



- Install the CTT
- Select the network interface (Options ->Network Interface)
- You may have to disable the firewall because it may block some network traffic
- Select the IUT (File -> Select IUT)
- Press Next

# CTT Step 2: Select the PICS

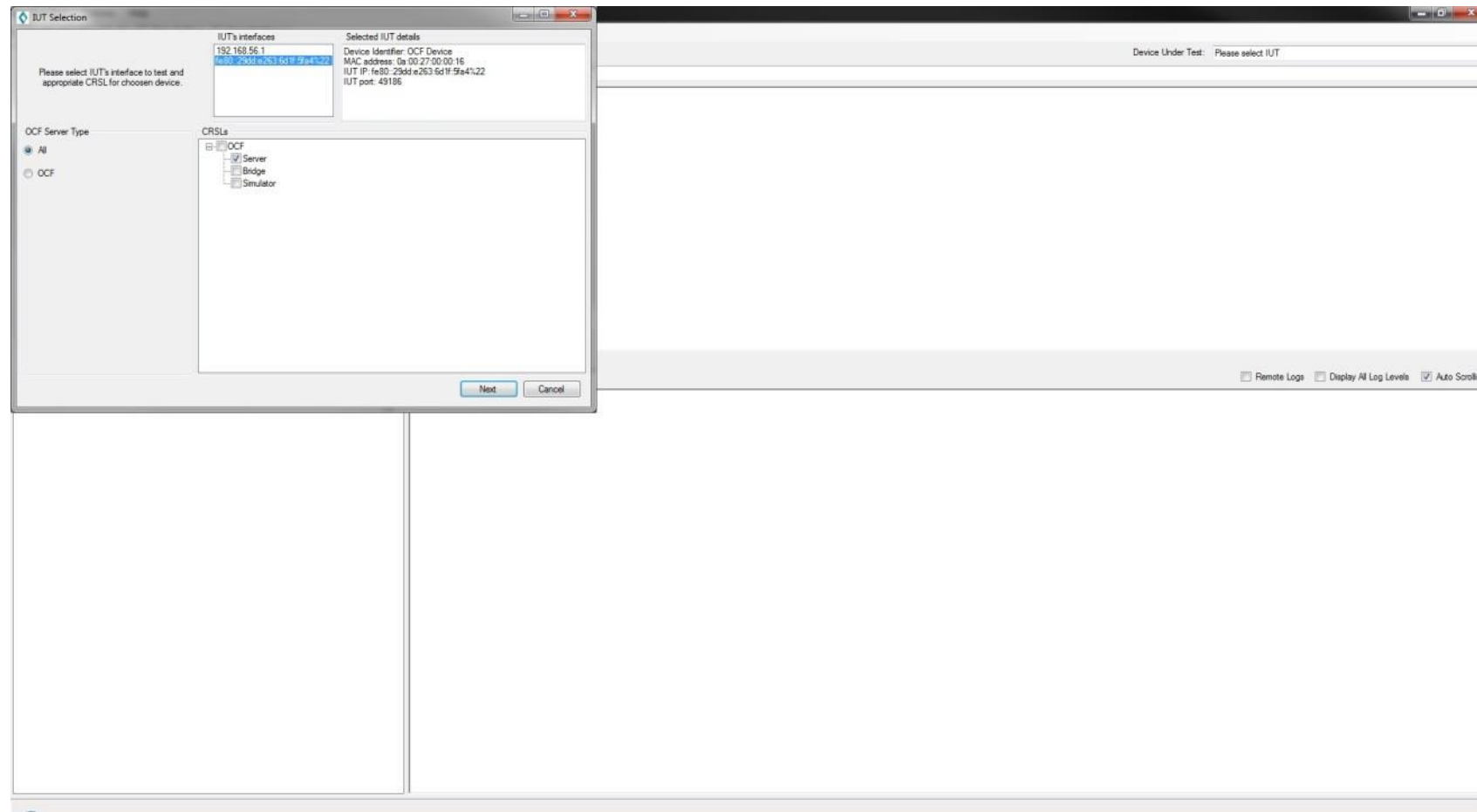


- Select the PICS that was generated by the OCMS
- Press Next

# CTT Step 3: Select the CRSL

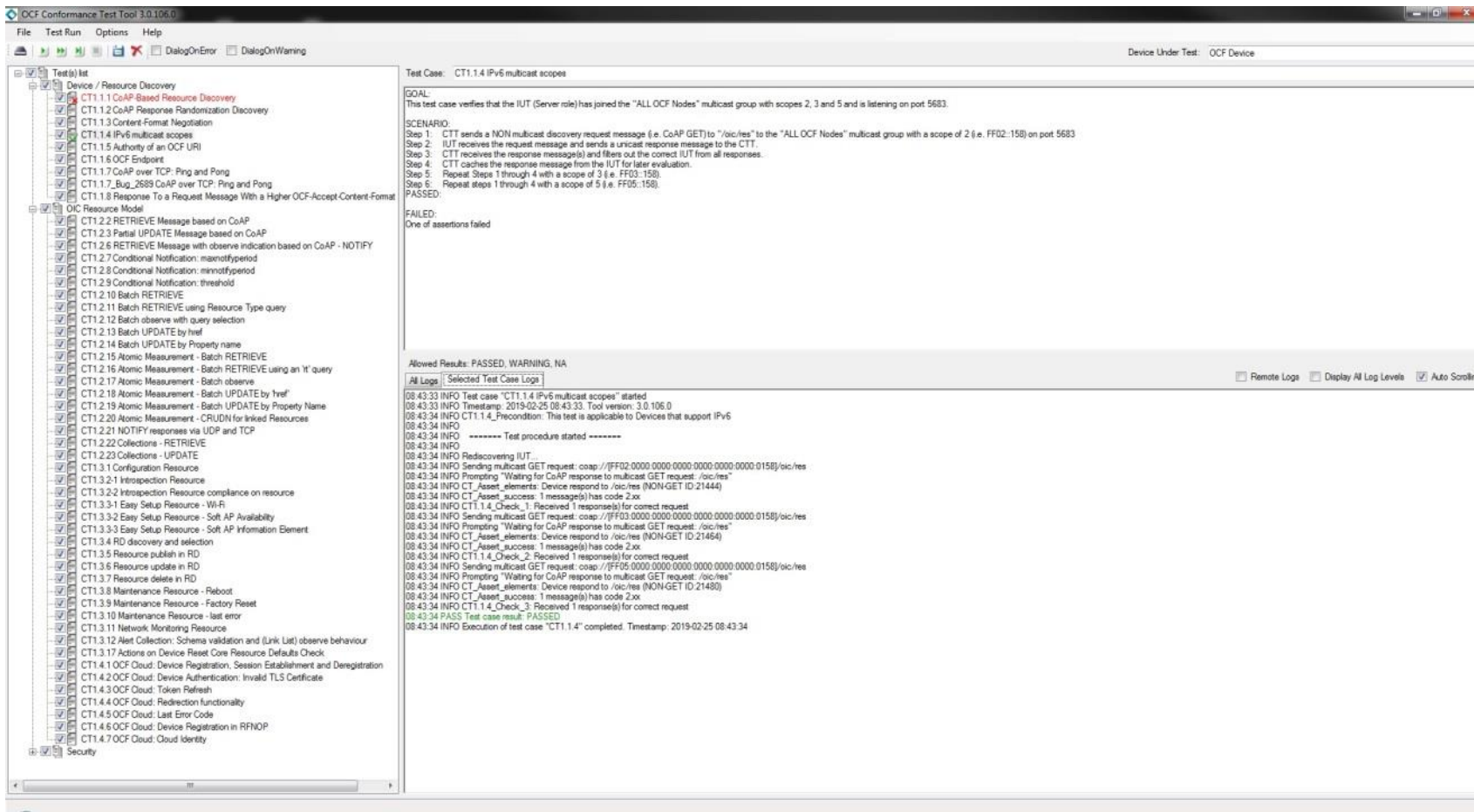


- Select the IUT's interface (IPv4 or IPv6)
- Select the CRSL (Server, Client, etc.)
- Press Next





# CTT Step 4: Run the test cases



- Select the test cases to run
  - Select every test case and the CTT will only run those that apply based on the PICS
- Press the play button
  - Passing TCs will have a green ✓
  - Failing TCs will have a red ✗
  - TCs not run will be grayed out
- When done, press File -> Save to save a copy of your test results





**OPEN** CONNECTIVITY  
FOUNDATION®